



# **NYLON 6.6** **PRODUCT** PORTFOLIO

JANUARY 2022

**NILIT**<sup>®</sup>

COMMITTED TO THE PLANET.  
COMMITTED TO YOU.

# TABLE OF CONTENTS

\*For Minimum Order Quantities (MOQ),  
kindly contact your nearest representative.

**NILIT**<sup>®</sup>



# SPECIALTY YARNS



**NILIT®**

COMMITTED TO THE PLANET.  
COMMITTED TO YOU.

FEATURE	YARN				LUSTER	CROSS-SECTION	PRODUCTION SITE	APPLICATIONS					
	dtex	final dtex	denier	final denier				covering	hosiery/socks	seamless	circular knit	weaving	warp knit
<b>SENSIL</b> <small>ECO CARE</small>	<b>TEXTURED</b>												
	22/10 ECO		20/10 ECO		<b>SD</b>	Flat	Israel	•	•	•	•	•	•
	22/20/1 ECO		20/20/1 ECO		<b>FD</b>	round	Israel	•	•	•	•	•	•
	22/10/1 ECO		20/10/1 ECO		<b>SD</b>	round	Israel	•	•	•	•	•	•
	44/34/1 ECO		40/34/1 ECO		<b>SD</b>	round	Israel	•	•	•	•	•	•
	44/34/1 ECO		40/34/1 ECO		<b>FD</b>	round	Israel	•	•	•	•	•	•
	44/34/2 ECO		40/34/2 ECO		<b>SD</b>	round	Israel	•	•	•	•	•	•
	44/34/2 ECO		40/34/2 ECO		<b>FD</b>	round	Israel	•	•	•	•	•	•
	78/68/1 ECO		70/68/1 ECO		<b>SD</b>	round	Israel	•	•	•	•	•	•
	78/68/1 ECO		70/68/1 ECO		<b>FD</b>	round	Israel	•	•	•	•	•	•
	78/68/2 ECO		70/68/2 ECO		<b>SD</b>	round	Israel	•	•	•	•	•	•
	78/68/2 ECO		70/68/2 ECO		<b>FD</b>	round	Israel	•	•	•	•	•	•

FEATURE	YARN				LUSTER	CROSS-SECTION	PRODUCTION SITE	APPLICATIONS					
	dtex	final dtex	denier	final denier				covering	hosiery/socks	seamless	circular knit	weaving	warp knit
<b>SENSIL</b> <small>BIO CARE</small>	<b>TEXTURED</b>												
	22/20/1		20/20/1		<b>BIO</b>	round	Israel	•	•	•	•	•	•
	44/34/1		40/34/1		<b>BIO</b>	round	Israel	•	•	•	•	•	•
	44/34/2		40/34/1		<b>BIO</b>	round	Israel	•	•	•	•	•	•
	78/68/1		70/68/1		<b>BIO</b>	round	Israel	•	•	•	•	•	•
	78/68/2		70/68/2		<b>BIO</b>	round	Israel	•	•	•	•	•	•

FEATURE	YARN				LUSTER	CROSS-SECTION	PRODUCTION SITE	APPLICATIONS					
	dtex	final dtex	denier	final denier				covering	hosiery/socks	seamless	circular knit	weaving	warp knit
SENSIL® WATER CARE	<b>TEXTURED - BLACK</b>												
	22/10/1		20/10/1		<b>BK</b>	round	Israel	•	•	•	•	•	•
	44/34/1		40/34/1		<b>BK</b>	round	Israel	•	•	•	•	•	•
	44/34/2		40/34/2		<b>BK</b>	round	Israel	•	•	•	•	•	•
	50/17 BD		45/17		<b>BD</b>	R+T	Israel	•	•	•	•		
	78/46/1		70/46/1		<b>BK</b>	round	Israel	•	•	•	•	•	•
	78/46/2		70/46/2		<b>BK</b>	round	Israel	•	•	•	•	•	•
	70/41 BD		63/41		<b>BD</b>	R+T	Israel	•	•	•	•	•	
	<b>TEXTURED - COLOR</b>												
	44/34/1		40/34/1		<b>COLOR</b>	round	Israel	•	•	•	•	•	•
	44/34/2		40/34/2		<b>COLOR</b>	round	Israel	•	•	•	•	•	•
	78/68/1		70-/68/1		<b>COLOR</b>	round	Israel	•	•	•	•	•	•
	78/68/28		70-/68/2		<b>COLOR</b>	round	Israel	•	•	•	•	•	•
	560/136		504/136		<b>COLOR</b>	round	Israel	•	•	•	•	•	•

FEATURE	YARN				LUSTER	CROSS-SECTION	PRODUCTION SITE	APPLICATIONS					
	dtex	final dtex	denier	final denier				covering	hosiery/socks	seamless	circular knit	weaving	warp knit
<b>SENSIL®</b> H E A T	<b>TEXTURED</b>												
	44/34/1		40/34/1		<b>SD</b>	round	Israel	•	•	•	•		
	44/34/2		40/34/2		<b>SD</b>	round	Israel	•	•	•	•		
	78/68/1		70/68/1		<b>SD</b>	round	Israel	•	•	•	•		
	78/68/2		70/68/2		<b>SD</b>	round	Israel	•	•	•	•		

FEATURE	YARN				LUSTER	CROSS-SECTION	PRODUCTION SITE	APPLICATIONS					
	dtex	final dtex	denier	final denier				covering	hosiery/socks	seamless	circular knit	weaving	warp knit
SENSIL <sup>®</sup> BODY FRESH	<b>POY</b>												
	27/10 BF	22/10/1 BF	24/10 BF	20/10/1 BF	<b>SD</b>	round	Israel	•	•	•			
	50/40 BF	40/40/1 BF	45/40 BF	36/40/1 BF	<b>SD</b>	round	Israel	•	•	•	•		
	55/34 BF	44/34/1 BF	44/34 BF	40/34/1 BF	<b>SD</b>	round	Israel	•	•	•	•		
	<b>FLAT</b>												
	40/40 BF		36/40 BF		<b>SD</b>	round cop	Israel	•	•	•			
	<b>TEXTURED</b>												
	22/10/1 BF		20/10/1 BF		<b>SD</b>	round	Israel	•	•	•	•	•	•
	40/40/1 BF		36/40/1 BF		<b>SD</b>	round	Israel	•	•	•	•	•	•
	40/40/2 BF		36/40/1 BF		<b>SD</b>	round	Israel	•	•	•	•	•	•
	78/68/1 BF		70/68/1 BF		<b>SD</b>	round	Israel	•	•	•	•	•	
	78/68/2 BF		70/68/2 BF		<b>SD</b>	round	Israel	•	•	•	•	•	
	78/68/1 BF		70/68/1 BF		<b>FD</b>	round	Israel	•	•	•	•	•	



FEATURE	YARN				LUSTER	CROSS-SECTION	PRODUCTION SITE	APPLICATIONS					
	dtex	final dtex	denier	final denier				covering	hosiery/socks	seamless	circular knit	weaving	warp knit
<b>SENSIL</b> <small>INNERGY</small>	<b>FLAT</b>												
	22/10 FIR		20/10 FIR		<b>SD</b>	round cop	Israel	•	•	•			
	44/34 FIR		40/34 FIR		<b>SD</b>	round cop	Israel	•	•	•			
	78/68 FIR		70/68 FIR		<b>SD</b>	round cop	Israel	•	•	•		•	
	<b>TEXTURED</b>												
	22/10/1 FIR		22/10/1 FIR		<b>SD</b>	round	Israel	•	•	•	•		
	44/34/1 FIR		40/34/1 FIR		<b>SD</b>	round	Israel	•	•	•	•	•	•
	44/34/2 FIR		40/34/2 FIR		<b>SD</b>	round	Israel	•	•	•	•	•	•
	78/68/1 FIR		78/68/1 FIR		<b>SD</b>	round	Israel	•	•	•	•	•	
	78/68/2 FIR		78/68/2 FIR		<b>SD</b>	round	Israel	•	•	•	•	•	

FEATURE	YARN				LUSTER	CROSS-SECTION	PRODUCTION SITE	APPLICATIONS					
	dtex	final dtex	denier	final denier				covering	hosiery/socks	seamless	circular knit	weaving	warp knit
<b>SENSIL®</b> B R E E Z E (RECYCLED)	44/34/1 ECO BZ		40/34/1 ECO BZ		<b>MAT</b>	oval/flat	Israel	•	•	•	•	•	•
	44/34/2 ECO BZ		44/34/2 ECO BZ		<b>MAT</b>	oval/flat	Israel	•	•	•	•	•	•
	78/68/1 ECO BZ		78/68/1 ECO BZ		<b>MAT</b>	oval/flat	Israel	•	•	•	•	•	•

FEATURE	YARN				LUSTER	CROSS-SECTION	PRODUCTION SITE	APPLICATIONS					
	dtex	final dtex	denier	final denier				covering	hosiery/socks	seamless	circular knit	weaving	warp knit
<b>SENSIL®</b> <small>B R E E Z E</small>	<b>TEXTURED</b>												
	22/14/1 BZ		20/14/1 BZ		<b>MAT</b>	Oval Flat	Israel	•	•	•	•	•	•
	33/34/1 BZ		30/34/1 BZ		<b>MAT</b>	Oval Flat	Israel	•	•	•	•	•	•
	44/34/1 BZ		40/34/1 BZ		<b>MAT</b>	Oval Flat	Israel	•	•	•	•	•	
	78/68/1 BZ		70/68/1 BZ		<b>MAT</b>	Oval Flat	Israel	•	•	•	•	•	
	44/34/2 BZ		40/34/2 BZ		<b>MAT</b>	Oval Flat	Israel	•	•	•	•	•	
	78/68/2 BZ		70/68/2 BZ		<b>MAT</b>	Oval Flat	Israel	•	•	•	•	•	
	<b>ATS</b>												
	110/68 BZ		110/68 BZ		<b>MAT</b>	round	Israel		•	•	•	•	

FEATURE	YARN				LUSTER	CROSS-SECTION	PRODUCTION SITE	APPLICATIONS						
	dtex	final dtex	denier	final denier				covering	hosiery/socks	seamless	circular knit	weaving	warp knit	
SENSIL <sup>®</sup> AQUARIUS	<b>POY</b>													
	55/34 A	44/34/1 A	50/34 A	40/34/1 A	<b>SD</b>	triple-T	Israel	•	•		•			
	100/68 A	78/68/1 A	90/68 A	70/68/1 A	<b>SD</b>	triple-T	Israel		•	•	•			
	<b>TEXTURED</b>													
	44/34/1 A		40/34/1 A		<b>SD</b>	triple-T	Israel	•	•	•	•			
	44/34/2 A	40/34/2 A			<b>SD</b>	triple-T	Israel	•	•	•				
	44/34/2 A		40/34/2 A		<b>SD</b>	triple-T	Israel	•	•	•				
	78/68/1 A		70/68/1 A		<b>SD</b>	triple-T	Israel		•	•	•			
	78/68/2 A		70/68/2 A		<b>SD</b>	triple-T	Israel		•	•	•			
	<b>ATS</b>													
	110/68 A		100/68 A		<b>SD</b>	triple-T	Israel		•	•	•	•		
	160/102 A		140/102 A		<b>SD</b>	triple-T	Israel		•	•	•	•		
	180/68 A		160/68 A		<b>SD</b>	triple-T	Israel		•	•	•	•		

FEATURE	YARN				LUSTER	CROSS-SECTION	PRODUCTION SITE	APPLICATIONS					
	dtex	final dtex	denier	final denier				covering	hosiery/socks	seamless	circular knit	weaving	warp knit
SENSIL® (COLORWISE)	<b>POY</b>												
	27/10 CW	22/10/1 CW	24/10 CW	20/10/1 CW	<b>SD</b>	round	Israel	•	•	•			
	55/34 CW	44/34/1 CW	50/34 CW	40/34/1 CW	<b>SD</b>	round	Israel	•	•	•	•		
	100/68 CW	78/68/1 CW	90/68 CW	70/68/1 CW	<b>SD</b>	round	Israel	•	•	•	•		
	<b>TEXTURED</b>												
	22/10/1 CW		22/10/1 CW		<b>SD</b>	round	Israel	•	•	•			
	44/34/1 CW		40/34/1 CW		<b>SD</b>	round	Israel	•	•	•			
	44/34/2 CW		40/34/2 CW		<b>SD</b>	round	Israel	•	•	•			
	78/68/1 CW		70/68/1 CW		<b>SD</b>	round	Israel			•	•		
	78/68/2 CW		70/68/2 CW		<b>SD</b>	round	Israel			•	•		

FEATURE	YARN				LUSTER	CROSS-SECTION	PRODUCTION SITE	APPLICATIONS					
	dtex	final dtex	denier	final denier				covering	hosiery/socks	seamless	circular knit	weaving	warp knit
SENSIL® (PASTELLE)	<b>POY</b>												
	27/10 PS	22/10/1 PS	24/10 PS	PS 20/10/1	<b>SD</b>	round	Israel	•	•	•			
	55/34 PS	44/34/1 PS	50/34 PS	PS 40/34/1	<b>SD</b>	round	Israel	•	•	•	•		
	100/68 PS	78/68/1 PS	90/68 PS	70/68/1 PS	<b>SD</b>	round	Israel	•	•	•	•		
	<b>FLAT</b>												
	44/34 PS		PS 40/34		<b>SD</b>	round cop	Israel	•	•	•			
	<b>TEXTURED</b>												
	22/10/1 PS		20/10/1 PS		<b>SD</b>	round	Israel	•	•	•			
	44/34/1 PS		40/34/1 PS		<b>SD</b>	round	Israel	•	•	•	•		
	44/34/2 PS		40/34/2 PS		<b>SD</b>	round	Israel		•	•	•		
	78/68/1 PS		70/68/1 PS		<b>SD</b>	round	Israel		•	•	•		

FEATURE	YARN				LUSTER	CROSS-SECTION	PRODUCTION SITE	APPLICATIONS					
	dtex	final dtex	denier	final denier				covering	hosiery/socks	seamless	circular knit	weaving	warp knit
<b>SENSIL<sup>®</sup></b> (ARAFELLE)	<b>TEXTURED</b>												
	22/15/2 AR		20/15/2 AR		<b>SD</b>	round	Israel		•	•	•		
	44/34/2 AR		40/34/2 AR		<b>SD</b>	round	Israel		•	•	•		
	78/68/2 AR		70/68/2 AR		<b>SD</b>	round	Israel			•	•		

FEATURE	YARN				LUSTER	CROSS-SECTION	PRODUCTION SITE	APPLICATIONS					
	dtex	final dtex	denier	final denier				covering	hosiery/socks	seamless	circular knit	weaving	warp knit
SENSIL® (DUELLE)	<b>TEXTURED</b>												
	22/10/2 AC		20/10/2 AC		<b>SD</b>	round	Israel		•	•			
	44/34/2 AC		40/34/2 AC		<b>SD</b>	round	Israel		•	•	•		
	78/68/2 AC		70/68/2 AC		<b>SD</b>	round	Israel		•	•	•		



FEATURE	YARN				LUSTER	CROSS-SECTION	PRODUCTION SITE	APPLICATIONS					
	dtex	final dtex	denier	final denier				covering	hosiery/socks	seamless	circular knit	weaving	warp knit
SENSIL® (DIAMOND)	50/27		45/277		<b>DI</b>	round	Israel	•	•	•	•	•	
	68/47		62/47		<b>DI</b>	round	Israel	•	•	•	•	•	
	115/126 DTY		104/126		<b>DI</b>	round	Israel	•	•	•	•	•	

FEATURE	YARN				LUSTER	CROSS-SECTION	PRODUCTION SITE	APPLICATIONS					
	dtex	final dtex	denier	final denier				covering	hosiery/socks	seamless	circular knit	weaving	warp knit
SENSIL® (BLACK DIAMOND)	50/17 BD		45/17		<b>BD</b>	round trilobal	Israel	•	•	•	•	•	
	70/41 BD		63/41		<b>BD</b>	round trilobal	Israel	•	•	•	•	•	

FEATURE	YARN				LUSTER	CROSS-SECTION	PRODUCTION SITE	APPLICATIONS					
	dtex	final dtex	denier	final denier				covering	hosiery/socks	seamless	circular knit	weaving	warp knit
<b>SENSIL®</b> <small>(BRITEX)</small>	<b>TEXTURED</b>												
	44/34/1 BX		40/34/1 BX		<b>BX</b>	trilobal	Israel	•	•	•	•		
	44/34/2 BX		40/34/2 BX		<b>BX</b>	trilobal	Israel	•	•	•	•		
	78/48/1 BX		70/48/1 BX		<b>BX</b>	trilobal	Israel	•	•	•			
	78/48/2 BX		70/48/2 BX		<b>BX</b>	trilobal	Israel	•	•	•			
	110/48/1 BX		100/48/1 BX		<b>BX</b>	trilobal	Israel	•	•	•			
	110/48/2 BX		100/48/2 BX		<b>BX</b>	trilobal	Israel	•	•	•			

FEATURE	YARN				LUSTER	CROSS-SECTION	PRODUCTION SITE	APPLICATIONS					
	dtex	final dtex	denier	final denier				covering	hosiery/socks	seamless	circular knit	weaving	warp knit
SENSIL® (DUOMIX)	<b>TEXTURED</b>												
	44/41/2 ST		40/41/2		<b>DM</b>	round	Israel	•	•	•	•	•	
	44/41/2 DOT		40/41/2		<b>DM</b>	round	Israel	•	•	•	•	•	
	64/53/2 ST		60/53/2		<b>DM</b>	round	Israel	•	•	•	•	•	
	64/53/2 DOT		60/53/2		<b>DM</b>	round	Israel	•	•	•	•	•	
	80/70/2 ST		70/70/2		<b>DM</b>	round	Israel	•	•	•	•	•	
	80/70/2 DOT		70/70/2		<b>DM</b>	round	Israel	•	•	•	•	•	

FEATURE	YARN				LUSTER	CROSS-SECTION	PRODUCTION SITE	APPLICATIONS					
	dtex	final dtex	denier	final denier				covering	hosiery/socks	seamless	circular knit	weaving	warp knit
SENSIL <sup>®</sup> (TRIOMIX)	<b>TEXTURED</b>												
	130/116 ST		120/116		<b>TM</b>	round cop	Israel	•	•	•	•		
	130/116 DOT		120/116		<b>TM</b>	round cop	Israel	•	•	•	•		

FEATURE	YARN				LUSTER	CROSS-SECTION	PRODUCTION SITE	APPLICATIONS					
	dtex	final dtex	denier	final denier				covering	hosiery/socks	seamless	circular knit	weaving	warp knit
SENSIL® (ATS)	<b>TEXTURED</b>												
	110/68		100/68		<b>BZ</b>	round	Israel	•	•	•	•	•	
	110/68		100/68		<b>HE</b>	round	Israel	•	•	•	•	•	
	110/68		100/68		<b>SD</b>	round	Israel	•	•	•	•	•	
	110/68		100/68		<b>MM</b>	round	Israel	•	•	•	•	•	
	110/68		100/68		<b>FD</b>	round	Israel	•	•	•	•	•	
	156/132		140/132		<b>SD</b>	round	Brazil	•	•	•	•	•	
	160/102 AC		140/102		<b>SD</b>	round	Israel	•	•	•	•	•	
	160/102 AR		140/102		<b>SD</b>	round	Israel	•	•	•	•	•	
	160/102		140/102		<b>MM</b>	round	Israel	•	•	•	•	•	
	160/102		140/102		<b>FD</b>	round	Israel	•	•	•	•	•	
	160/102		140/102		<b>IR</b>	round	Israel	•	•	•	•	•	
	180/136		160/136		<b>FD</b>	round	Israel	•	•	•	•	•	

FEATURE	YARN				LUSTER	CROSS-SECTION	PRODUCTION SITE	APPLICATIONS					
	dtex	final dtex	denier	final denier				covering	hosiery/socks	seamless	circular knit	weaving	warp knit
SENSIL <sup>®</sup> (ATS)	<b>TEXTURED</b>												
	180/136		160/136		<b>MM</b>	round	Israel	•	•	•	•	•	
	180/136		160/136		<b>AB</b>	round	Israel	•	•	•	•	•	
	180/136		160/136		<b>AR</b>	round	Israel	•	•	•	•	•	
	180/136		160/136		<b>BZ</b>	round	Brazil	•	•	•	•	•	
	180/136		160/136		<b>IR</b>	round	Israel	•	•	•	•	•	
	180/136		160/136		<b>PS</b>	round	Israel	•	•	•	•	•	
	180/136		160/136		<b>AC</b>	round	Israel	•	•	•	•	•	

FEATURE	YARN				LUSTER	CROSS-SECTION	PRODUCTION SITE	APPLICATIONS						
	dtex	final dtex	denier	final denier				covering	hosiery/socks	seamless	circular knit	weaving	warp knit	
NILIT® <b>TOUGHTEX</b>	<b>TEXTURED</b>													
	90/34		82/34		<b>SD</b>	round			•	•	•	•		
	180/68		164/68		<b>SD</b>	round				•	•	•		
	370/136		336/136		<b>SD</b>	round						•		
	560/136		509/136		<b>BR</b>	round						•		
	560/136		509/136		<b>BK</b>	round		•		•	•	•	•	
	770/102		700/102		<b>BR</b>	round		•		•	•	•	•	
	1100/136		1000/136		<b>BR</b>	round		•		•	•	•	•	
	<b>FDY HIGH TENACITY</b>													
	22/14 FDY		20/14		<b>BR</b>	round		•	•	•	•	•	•	•
	33/14 FDY		30/14		<b>BR</b>	round		•	•	•	•	•	•	•
	50/14 FDY		45/14		<b>BR</b>	round		•	•	•	•	•	•	•

FEATURE	YARN				LUSTER	CROSS-SECTION	PRODUCTION SITE	APPLICATIONS					
	dtex	final dtex	denier	final denier				covering	hosiery/socks	seamless	circular knit	weaving	warp knit
<b>Tactel®</b>	<b>POY</b>												
	19/10	42644	17/10	42278	<b>BR</b>	round	Israel	•	•				
	26/14	22/14/1	24/14	20/14/1	<b>BR</b>	round	Israel		•				
	28/10 BK	24/10/1BK	25/10 BK	22/10/1 BK	<b>BK</b>	round	Israel	•	•	•			
	41/20	33/20/1	37/20	30/20/1	<b>SD</b>	round	Israel		•	•			
	55/34	44/34/1	51/34	40/34/1	<b>SD</b>	round	Israel		•	•	•		
	56/34 BK	44/34/1 BK	51/34 BK	40/34/1 BK	<b>BK</b>	round	Israel		•	•	•		
	96/46	78/46/1	87/46	71/46/1	<b>BR</b>	trilobal	Israel		•	•	•		
	96/46 BK	78/46/1	87/46	71/46/1	<b>BK</b>	round	Israel		•	•	•		
	100/46	78/46/1	90/46	70/46/1	<b>FD</b>	round	Israel		•	•	•		
	100/68	78/68/1	90/68	70/68/1	<b>SD</b>	round	Israel	•	•	•	•		
100/68	78/68/1	90/68	70/68/1	<b>FD</b>	round	Israel	•	•	•	•	•		



FEATURE	YARN				LUSTER	CROSS-SECTION	PRODUCTION SITE	APPLICATIONS					
	dtex	final dtex	denier	final denier				covering	hosiery/socks	seamless	circular knit	weaving	warp knit
<b>Tactel®</b>	<b>POY</b>												
	200/92	156/92/1	182/92	142/92/1	<b>BR</b>	round	Israel		•		•		
	<b>FDY</b>												
	44/34		40/34		<b>FD</b>	round	Israel		•		•	•	
	78/68		70/68		<b>FD</b>	round	Israel		•	•	•	•	•
	90/103		82/103		<b>BR</b>	round	Israel			•	•	•	
	96/26		87/26		<b>BR</b>	diabolo	Israel			•	•	•	
	228/34		207/34		<b>SD</b>	round	Israel					•	

FEATURE	YARN				LUSTER	CROSS-SECTION	PRODUCTION SITE	APPLICATIONS						
	dtex	final dtex	denier	final denier				covering	hosiery/socks	seamless	circular knit	weaving	warp knit	
<b>Tactel®</b>	78/68		70/68		<b>BR</b>	round	Israel		•	•	•	•		
	156/136		142/136		<b>FD</b>	round	Israel			•	•	•		
	<b>TEXTURED</b>													
	22/10/1 BK		20/10/1		<b>BK</b>	round	Israel	•	•	•				
	44/34/1 BK		40/34/1		<b>BK</b>	round	Israel	•	•	•				
	44/34/2 BK		40/34/2		<b>BK</b>	round	Israel	•	•	•	•			
	78/46/1 BK		70/46/1		<b>BK</b>	round	Israel	•	•	•	•	•	•	•
	78/46/2 BK		70/46/1		<b>BK</b>	round	Israel	•	•	•	•	•	•	•

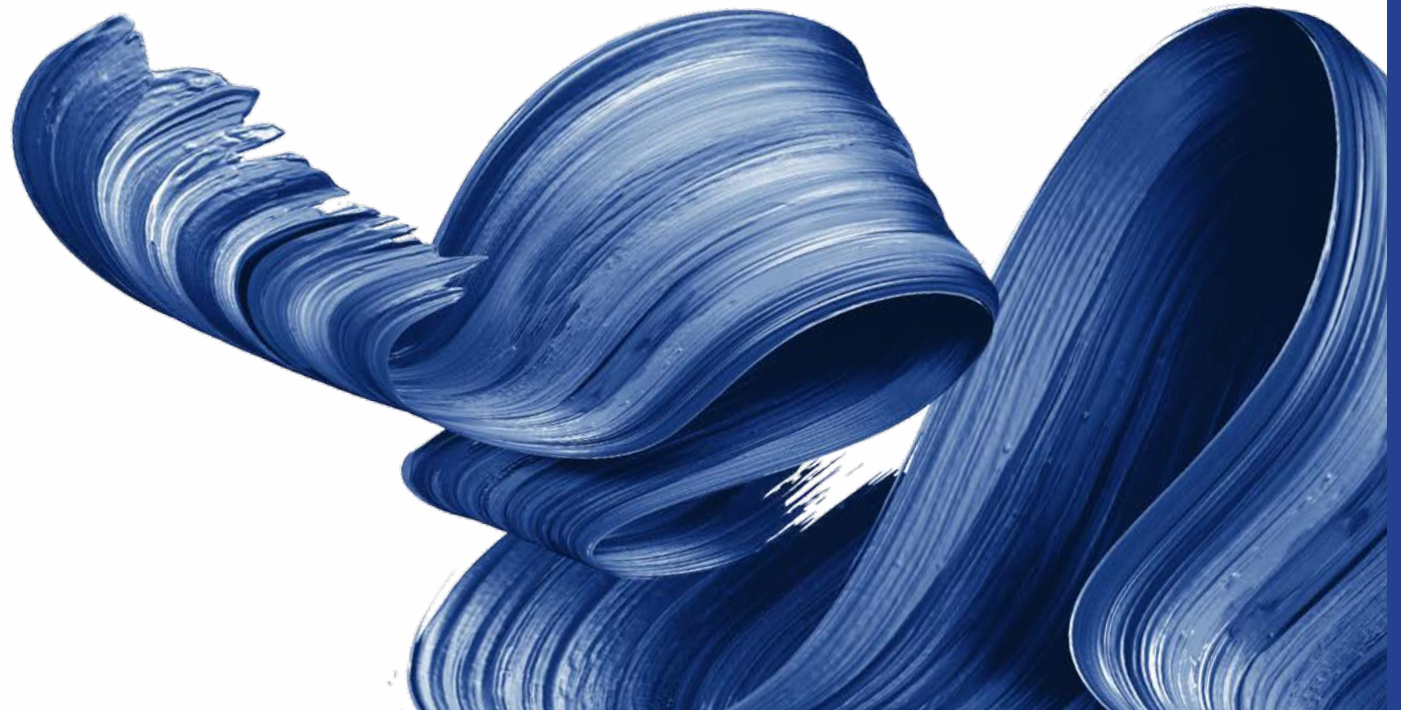
FEATURE	YARN				LUSTER	CROSS-SECTION	PRODUCTION SITE	APPLICATIONS					
	dtex	final dtex	denier	final denier				covering	hosiery/socks	seamless	circular knit	weaving	warp knit
<b>Supplex</b>	<b>SUPPLEX</b>												
	88/68		80/68		<b>FD</b>	round	Brazil		•	•	•	•	
	100/68		90/68		<b>FD+BK</b>	round	Brazil		•	•	•	•	
	160/102		140/102		<b>FD</b>	round	Brazil		•	•	•	•	
	165/102		150/102		<b>FD+BK</b>	round	Brazil		•	•	•	•	
	180/136		160/136		<b>FD</b>	round	Israel/ Brazil		•	•	•	•	
	194/114		175/114		<b>FD+BK</b>	round	Brazil		•	•	•	•	

FEATURE	YARN				LUSTER	CROSS-SECTION	PRODUCTION SITE	APPLICATIONS					
	dtex	final dtex	denier	final denier				covering	hosiery/socks	seamless	circular knit	weaving	warp knit
<b>CORDURA®</b> Fabric	<b>TEXTURED</b>												
	90/34		82/34		<b>SD</b>	round			•	•	•	•	
	180/68		164/68		<b>SD</b>	round				•	•	•	
	370/136		336/136		<b>SD</b>	round						•	
	560/136		509/136		<b>BR</b>	round						•	

# NYLON 6.6 **POY** YARNS

**NILIT**<sup>®</sup>

COMMITTED TO THE PLANET.  
COMMITTED TO YOU.



YARN				LUSTER	CROSS-SECTION	FEATURE	PRODUCTION SITE	APPLICATIONS					
dtex	final dtex	denier	final denier					covering	hosiery/socks	seamless	circular knit	weaving	warp knit
14/5	11/5/1	12/5	10/5/1	<b>SD</b>	round		Israel		•				
14/7	11/7/1	12/7	10/7/1	<b>SD</b>	round		Israel	•	•				
16/5	13/5/1	14/5	12/5/1	<b>SD</b>	round		Israel	•	•				
16/7	13/7/1	14/7	12/7/1	<b>SD</b>	round		Israel		•				
16/10	13/10/1	13/10	12/10/1	<b>SD</b>	round		Israel	•	•				
20/10	16/10/1	17/10	14/10/1	<b>SD</b>	round		Israel	•	•				
21/3	17/3/1	18/3	15/3/1	<b>SD</b>	round		Israel		•				
21/5	17/5/1	18/5	15/5/1	<b>SD</b>	round		Israel	•	•				
21/7	17/7/1	18/7	15/7/1	<b>SD</b>	round		Israel	•	•				
24/6	19/6/1	22/6	17/6/1	<b>SD</b>	round		Israel		•				
25/7	20/7/1	22/7	18/7/1	<b>SD</b>	round		Israel		•				
26/14	22/14/1	24/14	20/14/1	<b>BR</b>	round	TACTEL®	Israel		•				
27/7	22/7/1	24/7	20/7/1	<b>SD</b>	round		Israel	•	•				
27/10 CW	22/10/1	24/10 CW	20/10/1	<b>SD</b>	round	SENSIL® (COLORWISE)	Israel	•	•	•			
27/10 PS	22/10/1	24/10 PS	20/10/1	<b>SD</b>	round	SENSIL® (PASTELLE)	Israel	•	•	•			
27/10 BF	22/10/1	24/10 BF	20/10/1	<b>SD</b>	round	SENSIL® BODYFRESH	Israel	•	•	•			

YARN				LUSTER	CROSS-SECTION	FEATURE	PRODUCTION SITE	APPLICATIONS					
dtex	final dtex	denier	final denier					covering	hosiery/socks	seamless	circular knit	weaving	warp knit
27/20	22/20/1	24/20	20/20/1	<b>SD</b>	round		Israel		•		•		
28/10 BK	24/10/1	25/10	22/10/1	<b>BK</b>	round	TACTEL® soft black	Israel	•	•	•			
32/28	26/28/1	30/28	24/28/1	<b>SD</b>	round		Israel		•				
32/28	26/28/1	30/29	26/28/1	<b>SD</b>	round		Israel	•	•				
40/10	30/10	36/10	28/10/1	<b>SD</b>	round		Israel		•				
41/10	33/10/1	37/10	30/10/1	<b>SD</b>	round		Israel		•				
41/20	33/20/1	37/20	30/20/1	<b>SD</b>	round	TACTEL®	Israel		•	•			
41/34	33/34/1	37/34	30/34/1	<b>SD</b>	round		Israel		•	•			
50/40	40/40/1	45/40	36/40/1	<b>FD</b>	round		Israel			•	•		
50/40 BF	40/40/1	45/40 BF	36/40/1	<b>SD</b>	round	SENSIL® BODYFRESH	Israel	•	•	•	•		
50/60	40/60/1	45/60	36/60/1	<b>SD</b>	round		Israel	•	•	•	•	•	
52/40	40/40/1	47/40	36/40/1	<b>SD</b>	round		USA	•	•	•	•		•

YARN				LUSTER	CROSS-SECTION	FEATURE	PRODUCTION SITE	APPLICATIONS					
dtex	final dtex	denier	final denier					covering	hosiery/socks	seamles	circular knit	weaving	warp knit
54/48	44/48/1	49/48	40/48/1	<b>SD</b>	round		USA	•	•	•	•		•
55/13	44/13/1	50/13	40/13/1	<b>SD</b>	round		Israel/USA	•	•	•	•		•
55/13	44/13/1	50/13	40/13/1	<b>SD</b>	trilobal		USA	•	•	•			•
55/34	44/34/1	51/34	40/34/1	<b>SD</b>	round	TACTEL®	Israel		•	•	•		
55/34	44/34/1	50/34	40/34/1	<b>SD</b>	round		Israel/USA	•	•	•	•		
55/34 CW	44/34/1	50/34 CW	40/34/1	<b>SD</b>	round	SENSIL® (COLORWISE)	Israel	•	•	•	•		
55/34 BX	44/34/1	50/34 BX	40/34/1	<b>BR</b>	trilobal	SENSIL® Britex	Israel		•	•	•		
55/34 PS	44/34/1	50/34 PS	40/34/1	<b>SD</b>	round	SENSIL® Pastelle	Israel	•	•	•	•		
55/34 A	44/34/1	50/34 AQ	40/34/1	<b>SD</b>	triple-T	SENSIL® Aquarius	Israel	•	•		•		
55/34 FIR	44/34/1	50/34	40/34/1	<b>SD</b>	round	SENSIL® Innergy	Israel	•	•	•	•		
55/34 HE	44/34/1	50/34	40/34/1	<b>SD</b>	round	SENSIL® Heat	Israel	•	•	•	•		
56/34 BK	44/34/1	51/34	40/34/1	<b>BK</b>	round	TACTEL® soft black	Israel		•	•	•		
68/34	56/34/1	62/34	50/34/1	<b>SD</b>	round		Israel	•	•	•	•		
100/68 HE	78/68/1	90/68	70/68/1	<b>SD</b>	round	SENSIL® Heat	Israel	•	•	•	•		



YARN				LUSTER	CROSS-SECTION	FEATURE	PRODUCTION SITE	APPLICATIONS					
dtex	final dtex	denier	final denier					covering	hosiery/socks	seamless	circular knit	weaving	warp knit
70/60	60/60/1	63/60	54/60/1	<b>SD</b>	round		Israel		•		•		
70/60	60/60/1	63/60	54/60/1	<b>FD</b>	round		Israel			•			
70/92	60/92/1	63/92	54/92/1	<b>SD</b>	round		Israel			•			
75/60	60/60/1	68/60	54/60/1	<b>SD</b>	round		USA	•	•	•	•		•
88/68	66/68/1	80/68	60/68/1	<b>SD</b>	round		Israel/USA		•	•			
95/68	75/68/1	86/68	68/68/1	<b>SD</b>	round		USA	•	•	•	•		•
96/13	78/13/1	87/13	71/13/1	<b>SD</b>	round		Israel		•				
96/17	78/17/1	87/17	71/17/1	<b>SD</b>	round		Israel		•				
96/23	78/23/1	87/23	71/23/1	<b>SD</b>	round		Israel		•				
96/46	78/46/1	87/46	71/46/1	<b>BR</b>	trilobal	TACTEL®	Israel		•	•	•		
96/46 BK	78/46/1	87/46	71/46/1	<b>BK</b>	round	TACTEL® soft black	Israel		•	•	•		
100/68 FD	180/136**	90/68	70/68/1	<b>FD</b>	round	SUPPLEX®	Israel		•	•	•		

\*\*Air Jet Textured

YARN				LUSTER	CROSS-SECTION	FEATURE	PRODUCTION SITE	APPLICATIONS					
dtex	final dtex	denier	final denier					covering	hosiery/socks	seamless	circular knit	weaving	warp knit
100/17	78/17/1	90/17	70/17/1	<b>BR</b>	trilobal		USA	•	•	•	•		•
100/17	78/17/1	90/17	70/17/1	<b>BR</b>	round		USA	•	•	•	•		•
100/34	78/34/1	90/34	70/34/1	<b>BR</b>	round		USA	•	•	•	•	•	•
100/34	78/34/1	90/34	70/34/1	<b>SD</b>	round		USA	•	•	•	•	•	•
100/46	78/46/1	90/46	70/46/1	<b>FD</b>	round	TACTEL®	Israel		•	•	•		
100/48	78/48/1	90/48	70/48/1	<b>BR</b>	trilobal		Israel	•	•	•	•		
100/52	78/52/1	90/52	70/52/1	<b>BR</b>	trilobal		USA	•	•	•	•	•	
100/68	78/68/1	90/68	70/68/1	<b>SD</b>	round	TACTEL®	Israel	•	•	•	•		
100/68 FIR	78/68/1	90/68	70/68/1	<b>SD</b>	round	SENSIL® Innergy	Israel	•	•	•	•	•	•
100/68	78/68/1	90/68	70/68/1	<b>FD</b>	round	TACTEL®	Israel/ USA	•	•	•	•	•	
100/68 A	78/68/1	90/68 AQ	70/68/1	<b>SD</b>	triple-T	SENSIL® Aquarius	Israel		•	•	•		
100/68 CW	78/68/1	90/68 CW	70/68/1	<b>SD</b>	round	SENSIL® Colorwise	Israel	•	•	•	•		
101/34	78/34/1	91/34	70/34/1	<b>BR</b>	trilobal		USA	•	•	•	•	•	•
105/17	78/17/1	95/17	70/17/1	<b>SD</b>	round		USA	•	•	•	•		•

YARN				LUSTER	CROSS-SECTION	FEATURE	PRODUCTION SITE	APPLICATIONS					
dtex	final dtex	denier	final denier					covering	hosiery/socks	seamless	circular knit	weaving	warp knit
105/23	78/23/1	95/23	70/23/1	<b>SD</b>	round		Israel		•	•	•		
105/34	78/34/1	95/34	70/34/1	<b>SD</b>	round		Israel/ USA	•	•	•	•	•	•
105/46	78/46/1	95/46	70/46/1	<b>BR</b>	round		USA	•	•	•	•		
105/48	78/48/1	95/48	70/48/1	<b>SD</b>	round		USA	•	•	•	•	•	•
105/48	78/48/1	95/48	70/48/1	<b>BR</b>	round		USA	•	•	•	•	•	
105/68	78/68/1	95/68	70/68/1	<b>SD</b>	round		USA	•	•	•	•	•	
105/103	78/103/1	95/103	70/103/1	<b>FD</b>	round		USA			•	•		
106/68	78/68/1	95/68	70/68/1	<b>FD</b>	round		USA	•	•	•	•	•	
110/92	85/92/1	100/92	80/92/1	<b>SD</b>	round		Israel		•	•	•		
120/96	88/96/1	108/96	80/96/1	<b>FD</b>	round		USA	•	•	•	•	•	
140/34	110/34/1	127/34	100/34/1	<b>SD</b>	round		Israel/ USA	•	•	•	•	•	
140/48	110/48/1	127/48	100/48/1	<b>BR</b>	trilobal		Israel	•	•	•	•		
140/92	110/92/1	127/92	100/92/1	<b>SD</b>	round	TACTEL®	Israel		•	•	•		

YARN				LUSTER	CROSS-SECTION	FEATURE	PRODUCTION SITE	APPLICATIONS					
dtex	final dtex	denier	final denier					covering	hosiery/socks	seamless	circular knit	weaving	warp knit
21/17				<b>SD</b>	round		USA	•	•	•	•		
41/10				<b>SD</b>	round		USA	•	•				
41/34				<b>SD</b>	round		USA	•	•	•	•		•
55/46				<b>SD</b>	round		USA	•	•	•	•	•	•
70/17				<b>SD</b>	round		USA		•	•	•	•	•
90/68				<b>SD</b>	round		USA	•	•	•	•		
95/34				<b>SD</b>	round		USA	•	•	•	•	•	•
100/34				SD	round		USA	•	•	•	•	•	•
105/24				<b>SD</b>	round		USA	•	•	•	•	•	
113/34				<b>SD</b>	round		USA		•		•	•	
200/92	156/92/1	182/92	142/92/1	<b>BR</b>	trilobal	TACTEL®	Israel		•		•		
210/68	170/68/1	190/68	150/68/1	<b>SD</b>	round		USA	•	•	•	•	•	

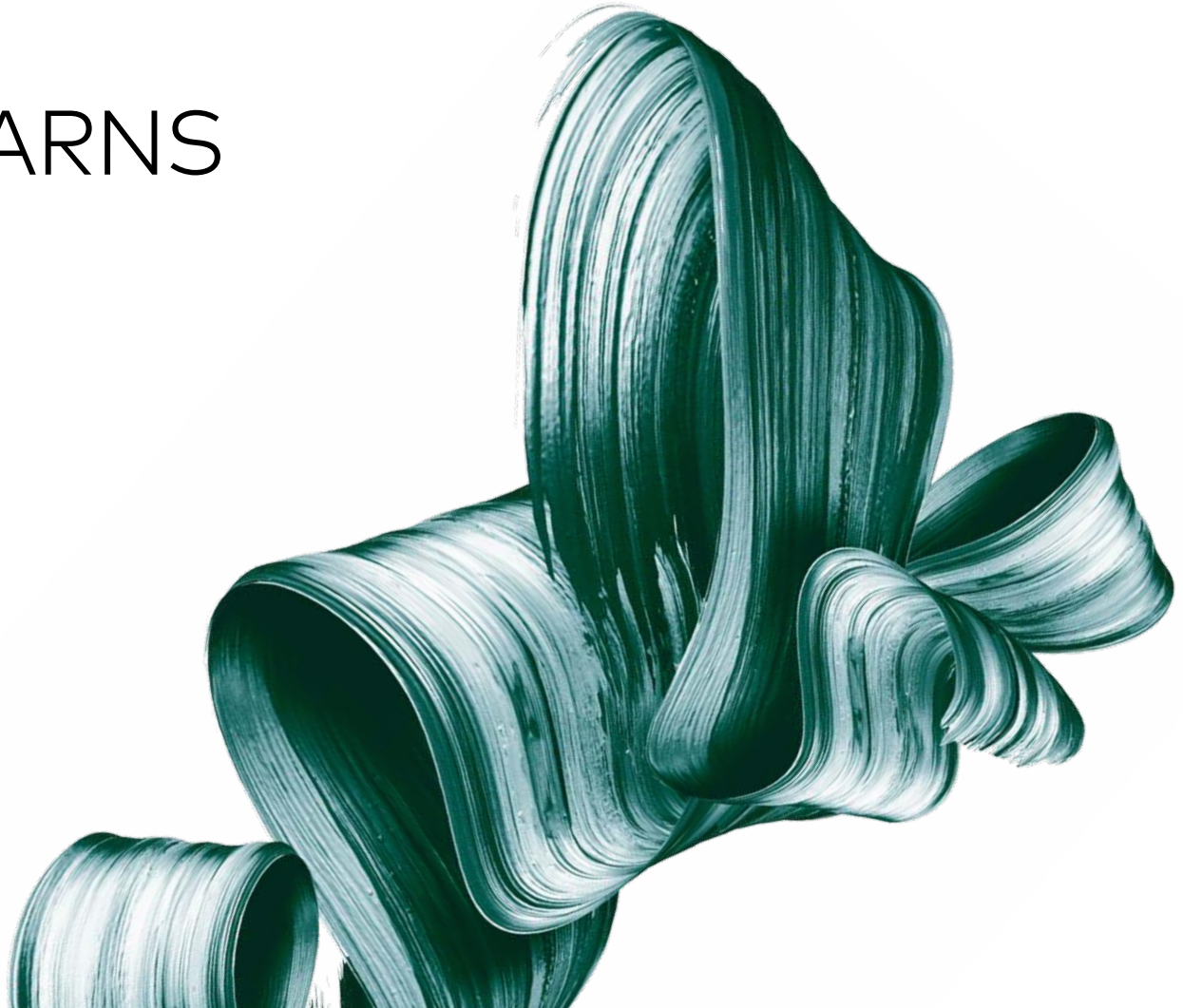
YARN				LUSTER	CROSS-SECTION	FEATURE	PRODUCTION SITE	APPLICATIONS					
dtex	final dtex	denier	final denier					covering	hosiery/socks	seamless	circular knit	weaving	warp knit
55/34 BF	44/34/1	44/34 BF	40/34/1	<b>SD</b>	round	SENSIL® Bodyfresh	Israel	•	•	•	•		
55/34				<b>FD</b>	round		USA	•	•	•	•	•	•
100/68				<b>FD</b>	round		USA	•	•	•	•	•	
100/68	78/68/1	90/68	70/68/1	<b>BR</b>	round		Israel	•	•	•	•		
105/24				<b>SD</b>	round		USA						
105/34				<b>FD</b>	round		USA	•	•	•	•	•	•
105/34				<b>BLACK</b>	round		USA	•	•	•	•	•	
105/68				<b>FD</b>	round		USA	•	•	•	•	•	•
113/34				<b>SD</b>	round		USA						
135/34				<b>SD</b>	round		USA		•		•	•	
135/34				<b>SD</b>	round		USA						
140/68				<b>FD</b>	round		USA	•	•	•	•	•	

YARN				LUSTER	CROSS-SECTION	FEATURE	PRODUCTION SITE	APPLICATIONS					
dtex	final dtex	denier	final denier					covering	hosiery/socks	seamless	circular knit	weaving	warp knit
100/92	78/92/1	90/92	70/92/1	<b>SD</b>	round		Israel				•		
100/68 BF	78/68/1	70/68	70/68/1	<b>SD</b>	round		Israel	•	•	•	•	•	•
100/68 BF	78/68/1	70/68	70/68/1	<b>FD</b>	round		Israel	•	•	•	•	•	•

# NYLON 6.6 **FLAT** YARNS

**NILIT**<sup>®</sup>

COMMITTED TO THE PLANET.  
COMMITTED TO YOU.



YARN				LUSTER	CROSS-SECTION	FEATURE	PRODUCTION SITE	APPLICATIONS					
dtex	final dtex	denier	final denier					covering	hosiery/socks	seamless	circular knit	weaving	warp knit
8/5	7/5	<b>SD</b>	round	cop		Israel	•						
11/7	10/7	<b>SD</b>	round	cop		Israel	•						
13/7	12/7	<b>SD</b>	round	cop		Israel	•						
13/10	12/10	<b>SD</b>	round	cop		Israel	•						
14/5	13/5	<b>SD</b>	round	cop		Israel		•					
17/1	15/1	<b>BR</b>	trilobal	cop		USA		•					
17/1	15/1	<b>SD</b>	round	cop		USA		•		•			
17/3	15/3	<b>SD</b>	round	cop		Israel		•		•			
17/3	15/3	<b>BR</b>	round	cop		Israel		•					
17/5	15/5	<b>SD</b>	round	cop		Israel	•	•					
17/7	15/7	<b>SD</b>	round	cop		Israel	•	•					
22/7	20/7	<b>SD</b>	round	cop		Israel	•	•					
22/7	20/7	<b>BR</b>	trilobal	cop		Israel	•	•					
22/7	20/7	<b>BR</b>	round	cop		Israel		•					
22/10	20/10	<b>SD</b>	round	cop		Israel		•					



YARN				LUSTER	CROSS-SECTION	FEATURE	PRODUCTION SITE	APPLICATIONS					
dtex	final dtex	denier	final denier					covering	hosiery/socks	seamless	circular knit	weaving	warp knit
23/3	21/3	<b>SD</b>	round	cop		Israel		•					
29/20	26/20	<b>SD</b>	round	cop		Israel		•	•				
33/1	30/1	<b>SD</b>	round	cop		USA			•	•			
33/10	30/10	<b>SD</b>	round	cop		Israel	•	•					
33/20	30/20	<b>SD</b>	round	cop		Israel	•	•					
44/13	40/13	<b>SD</b>	round	cop		Israel	•	•					
44/34	40/34	<b>SD</b>	round	bobbin		Israel		•			•		
44/34	40/34	<b>BR</b>	trilobal	cop		Israel		•	•				
60/60	54/60	<b>SD</b>	round	cop		Israel		•					
78/23	70/23	<b>SD</b>	round	cop		Israel	•	•		•			
78/48	70/48	<b>BR</b>	trilobal	cop		Israel		•	•	•			
110/34	100/34	<b>SD</b>	round	cop		Israel		•					
110/48	100/48	<b>BR</b>	trilobal	bobbin		Israel			•	•			
110/48	100/48	<b>BR</b>	trilobal	cop		Israel			•	•			
156/96	140/96	<b>BR</b>	trilobal	cop		Israel		•	•	•			

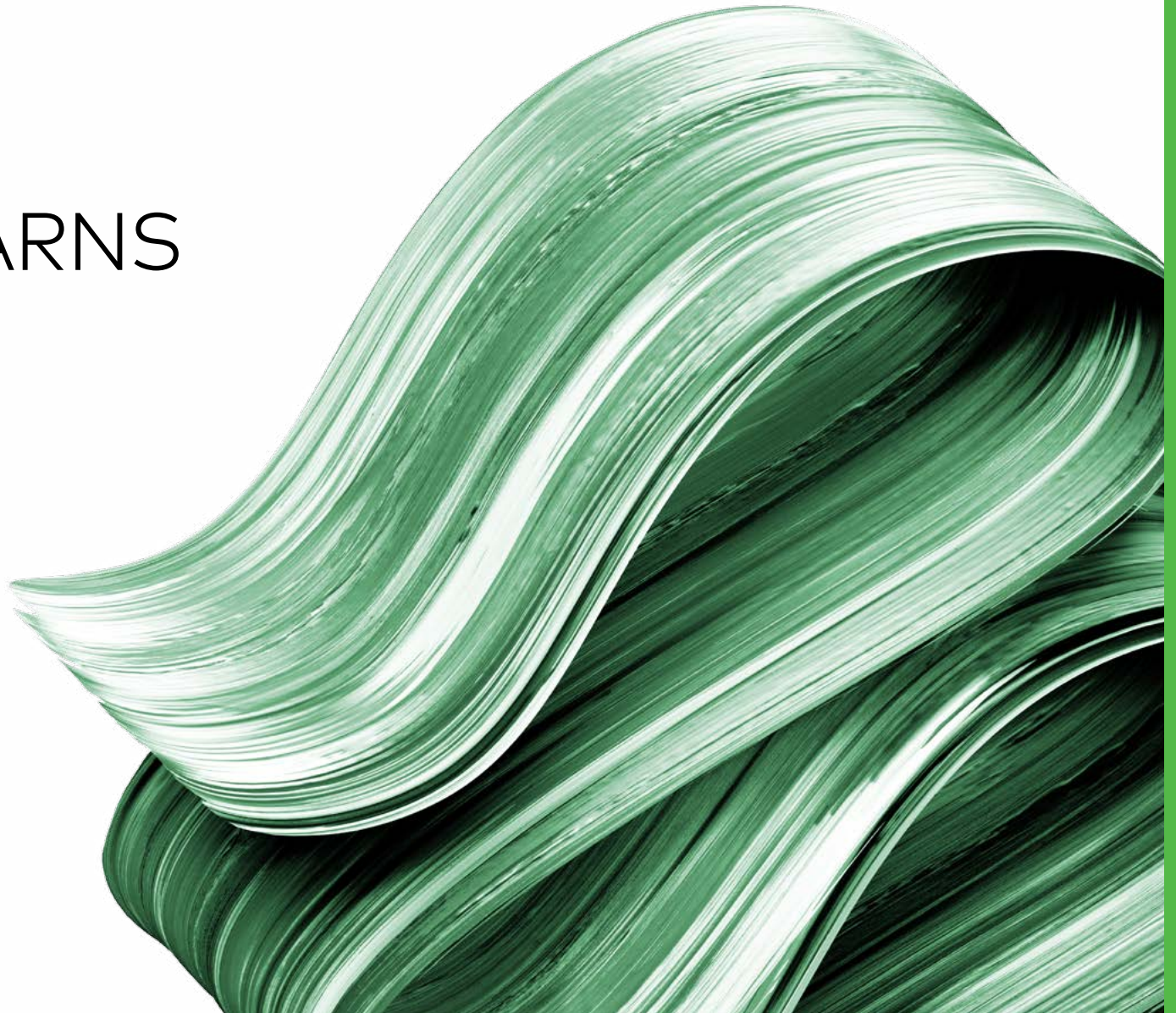
YARN				LUSTER	CROSS-SECTION	FEATURE	PRODUCTION SITE	APPLICATIONS					
dtex	final dtex	denier	final denier					covering	hosiery/socks	seamless	circular knit	weaving	warp knit
17/1	15/1	<b>SD</b>	round		Monofilament	USA	•	•				•	
22/1	20/1	<b>SD</b>	round		Monofilament	USA	•	•				•	
22/7	20/7	<b>SD</b>	round			USA	•	•					
22/7	20/7	<b>BR</b>	round	bobbin		Israel		•					
22/10	20/10	<b>BK</b>	round	cop	TACTEL® soft black	Israel	•	•					
22/10 FIR	20/10 FIR	<b>SD</b>	round	cop	SENSIL® Innergy	Israel							
22/14	20/14	<b>BR</b>	round	cop		Israel	•	•					
33/1	30/1	<b>SD</b>	round		Monofilament	USA	•	•			•	•	
33/10	30/10	<b>SD</b>	round			USA	•	•					
33/7	30/7	<b>SD</b>	round			USA	•	•	•				
40/40 BF	36/40 BF	<b>SD</b>	round	cop	SENSIL® Bodyfresh	Israel	•	•					
156/96	140/96	<b>BR</b>	trilobal	bobbin		Israel		•	•	•			
156/96	140/96	<b>BR</b>	trilobal	cop		Israel	•	•	•	•	•		
220/10	200/10	<b>SD</b>	round	cop		USA					•		
224/10	200/10	<b>SD</b>	round			USA				•	•	•	

YARN				LUSTER	CROSS-SECTION	FEATURE	PRODUCTION SITE	APPLICATIONS					
dtex	final dtex	denier	final denier					covering	hosiery/socks	seamless	circular knit	weaving	warp knit
44/34 PS	40/34 PS	<b>SD</b>	round	cop	SENSIL® (Pastelle)	Israel	•	•	•				
44/34	40/34	<b>SD</b>	round	cop	SENSIL® Innergy	Israel	•	•	•				
44/34	40/34	<b>BK</b>	round	cop	TACTEL® soft black	Israel	•	•					
78/68 FIR	70/68 FIR	<b>SD</b>	round	cop	SENSIL® Innergy	Israel	•	•	•		•		

# NYLON 6.6 **FDY** YARNS

**NILIT**<sup>®</sup>

COMMITTED TO THE PLANET.  
COMMITTED TO YOU.



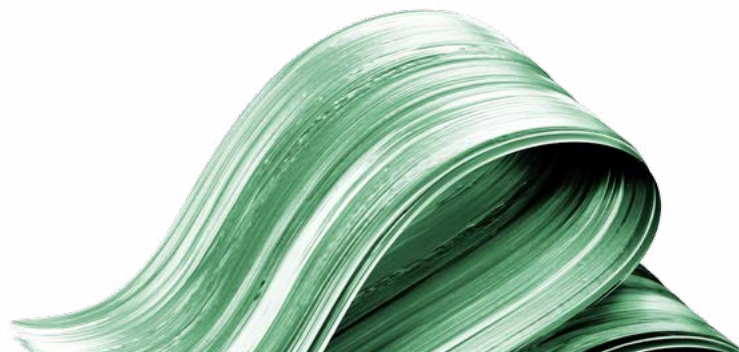
YARN		LUSTER	CROSS-SECTION	FEATURE	PRODUCTION SITE	APPLICATIONS					
dtex	denier					covering	hosiery/socks	seamless	circular knit	weaving	warp knit
14/3	13/3	<b>SD</b>	round		Israel	•	•				
17/3	15/3	<b>SD</b>	round		Israel		•				
17/3	15/3	<b>SD</b>	round	Modified POY	Israel		•				
17/3	15/3	<b>BR</b>	round		Israel		•				
17/5	15/5	<b>SD</b>	round		Israel		•				
17/7	15/7	<b>SD</b>	round	Modified POY	Israel		•				
17/7	15/7	<b>BR</b>	round		Israel		•				
18/6	16/6	<b>BR</b>	round		Israel	•	•				
22/7	20/7	<b>BR</b>	trilobal		Israel		•				
22/7	20/7	<b>SD</b>	round		Israel		•				
22/7	20/7	<b>BR</b>	round		Israel	•	•	•	•		•
22/7	20/7	<b>SD</b>	round	Modified POY	Israel		•				

YARN		LUSTER	CROSS-SECTION	FEATURE	PRODUCTION SITE	APPLICATIONS					
dtex	denier					covering	hosiery/socks	seamless	circular knit	weaving	warp knit
22/14	20/14	<b>BR</b>	round	Higher Tenacity	Israel	•	•	•	•	•	
22/14	20/14	<b>SD</b>	round		Israel		•				
33/14	30/14	<b>BR</b>	round	Higher Tenacity	Israel	•	•	•	•	•	
44/13	40/13	<b>SD</b>	trilobal		USA						•
44/13	40/13	<b>FD</b>	trilobal		USA						•
44/13	40/13	<b>FD</b>	round		USA						•
44/13	40/13	<b>BR</b>	trilobal		USA						•
44/13	40/13	<b>SD</b>	round		USA						•
44/34	40/34	<b>FD</b>	round		USA					•	•
44/34	40/34	<b>SD</b>	round		USA					•	•
44/34	40/34	<b>BR</b>	trilobal		USA			•			•

YARN		LUSTER	CROSS-SECTION	FEATURE	PRODUCTION SITE	APPLICATIONS					
dtex	denier					covering	hosiery/socks	seamless	circular knit	weaving	warp knit
44/34	40/34	<b>FD</b>	round	TACTEL®	Israel		•		•	•	
50/13	45/13	<b>FD</b>	round		USA						•
55/17	50/17	<b>FD</b>	round		USA						•
55/17	50/17	<b>SD</b>	round		USA						•
60/60	54/60	<b>FD</b>	round		Israel	•	•	•	•		
78/17	70/17	<b>BR</b>	trilobal		USA					•	•
78/20	70/20	<b>SD</b>	round		Israel					•	
78/24	70/24	<b>SD</b>	round		USA					•	•
78/34	70/34	<b>BR</b>	trilobal		USA					•	•
78/34	70/34	<b>SD</b>	round		USA					•	•
78/34	70/34	<b>BR</b>	round		USA					•	•
78/34	70/34	<b>SD</b>	round		Israel					•	



TACTEL® fiber is a registered trademark of INVISTA and is used under license to NILIT, for nylon fiber products.



YARN		LUSTER	CROSS-SECTION	FEATURE	PRODUCTION SITE	APPLICATIONS					
dtex	denier					covering	hosiery/socks	seamless	circular knit	weaving	warp knit
78/52	70/52	<b>BR</b>	trilobal		USA		•	•	•		
78/68	70/68	<b>FD</b>	round		USA		•	•	•		•
90/103	82/103	<b>BR</b>	round	TACTEL®	Israel			•	•	•	
96/26	87/26	<b>X-BR</b>	diabolo	TACTEL® diabolo	Israel			•	•	•	
110/34	100/34	<b>BR</b>	trilobal		USA					•	•
110/34	100/34	<b>SD</b>	round		USA					•	•
110/34	100/34	<b>SD</b>	round		Israel					•	
110/34	100/34	<b>BR</b>	round		USA					•	•
156/34	140/34	<b>BR</b>	trilobal		USA				•		•
228/34	207/34	<b>SD</b>	round		Israel					•	



YARN		LUSTER	CROSS-SECTION	FEATURE	PRODUCTION SITE	APPLICATIONS					
dtex	denier					covering	hosiery/socks	seamless	circular knit	weaving	warp knit
44/13	40/13	FD	round		USA					•	•
44/34	40/34	FD	round		USA					•	•
44/13	40/13	<b>BR</b>	trilobal		USA						•
44/34	40/34	<b>BR</b>	trilobal		USA						•
56/17	50/17	FD	round		USA					•	•
78/34	70/34	<b>BR</b>	round		USA					•	•
78/17	70/17	<b>BR</b>	trilobal		USA						•
78/52	70/52	<b>BR</b>	trilobal		USA			•			
110/34	100/34	<b>BR</b>	round		USA					•	•
110/34	100/34	<b>BR</b>	trilobal		USA					•	•
110/52	100/52	<b>BR</b>	trilobal		USA					•	•
154/34	140/34	<b>BR</b>	trilobal		USA					•	•
156/34	140/34	BR	trilobal		USA					•	•
224/34	200/34	<b>BR</b>	round		USA					•	•
224/34	200/34	BR	trilobal		USA					•	•
224/68	200/68	<b>BR</b>	round		USA					•	•

YARN		LUSTER	CROSS-SECTION	FEATURE	PRODUCTION SITE	APPLICATIONS					
dtex	denier					covering	hosiery/socks	seamless	circular knit	weaving	warp knit
44/13	40/13	<b>SD</b>	trilobal		USA					•	•
44/13	40/13	<b>FD</b>	trilobal		USA					•	•
44/13	40/13	<b>SD</b>	round		USA	•	•		•	•	•
44/34	40/34	<b>SD</b>	round		USA	•	•			•	•
56/48	50/48	<b>SD</b>	round		USA					•	•
78/24	70/24	<b>SD</b>	round		USA		•			•	•
78/34	70/34	<b>SD</b>	round		USA					•	
78/34	70/34	<b>FD</b>	round		USA					•	•
78/68	70/68	<b>FD</b>	round		USA					•	•
110/34	100/34	<b>SD</b>	round		USA					•	•
110/48	100/48	<b>SD</b>	trilobal		USA		•	•	•		
110/48	110/34	<b>SD</b>	round		USA		•	•		•	•
154/34	140/34	<b>SD</b>	round		USA					•	•

YARN		LUSTER	CROSS-SECTION	FEATURE	PRODUCTION SITE	APPLICATIONS					
dtex	denier					covering	hosiery/socks	seamless	circular knit	weaving	warp knit
78/68	71/68	<b>BR</b>	round	TACTEL®	Israel		•	•		•	•
156/136	142/136	<b>FD</b>	round	TACTEL®	Israel			•		•	•

# NYLON 6.6 **TEXTURED** YARNS



**NILIT**<sup>®</sup>

COMMITTED TO THE PLANET.  
COMMITTED TO YOU.

YARN		LUSTER	CROSS-SECTION	PRODUCTION SITE	FEATURE	APPLICATIONS					
dtex	denier					covering	hosiery/socks	seamless	circular knit	weaving	warp knit
11/7/1	10/7/1	<b>SD</b>	round	Israel		•	•				
13/5/1	12/5/1	<b>SD</b>	round	Israel		•	•				
13/10/1	12/10/1	<b>SD</b>	round	Israel			•				
16/10/1	14/10/1	<b>SD</b>	round	Israel / Brazil			•				
17/3/1	15/3/1	<b>BR</b>	round	Israel	Stretch		•				
17/5/1	15/5/1	<b>SD</b>	round	Israel / Brazil		•	•	•	•		
17/7/1	15/7/1	<b>SD</b>	round	Israel		•	•				
19/6/1	17/6/1	<b>SD</b>	round	Israel		•	•				
20/7/1	18/7/1	<b>BR</b>	round	Israel		•	•				
22/7/1	20/7/1	<b>SD</b>	round	Israel / Brazil		•	•	•			
22/7/2	20/7/2	<b>SD</b>	round	Israel			•	•	•		
22/10/1 BF	20/10/1 BF	<b>SD</b>	round	Israel	SENSIL® Bodyfresh	•	•	•			

YARN		LUSTER	CROSS-SECTION	PRODUCTION SITE	FEATURE	APPLICATIONS					
dtex	denier					covering	hosiery/socks	seamless	circular knit	weaving	warp knit
22/10/1 FIR	20/10/1 FIR	<b>SD</b>	round	Israel	SENSIL® Innergy	•	•	•	•	•	•
22/10/1 PS	20/10/1 PS	<b>SD</b>	round	Israel	SENSIL® (Pastelle)	•	•	•			
22/10/1	20/10/1	<b>SD</b>	round	Israel		•	•	•			
22/10/1 CW	20/10/1 CW	<b>SD</b>	round	Israel	SENSIL® (Colorwise)	•	•	•			
22/10/1	20/10/1	<b>BK</b>	round	Israel / Brazil	TACTEL® soft black (Dope Dye)	•	•	•			
22/10/1 ECO	20/10/1 ECO	<b>SD</b>	round	Israel		•	•	•	•		
22/10/1 ECO	20/10/1 ECO	<b>FD</b>	round	Israel		•	•	•	•		
22/10/2 AC	20/10/2 AC	<b>SD</b>	round	Israel	SENSIL® (Duelle)		•	•			
22/15/2 AR	20/15/2 AR	<b>SD</b>	round	Israel	SENSIL® (Arafelle)		•	•	•		
22/20/1	20/20/1	<b>SD</b>	round	Israel / Brazil / china		•	•	•	•		
22/20/2	20/20/2	<b>SD</b>	round	Israel / China		•	•	•	•		
22/34/1	20/34/1	<b>SD</b>	round	China		•	•	•	•		
29/20/1	26/20/1	<b>SD</b>	round	China		•	•	•	•		
30/10/1	27/10/1	<b>SD</b>	round	Israel / Brazil			•	•			
33/6/2	30/6/2	<b>SD</b>	round	Israel			•				

YARN		LUSTER	CROSS-SECTION	PRODUCTION SITE	FEATURE	APPLICATIONS					
dtex	denier					covering	hosiery/socks	seamless	circular knit	weaving	warp knit
33/10/1	30/10/1	<b>SD</b>	round	Israel			•				
33/10/2	30/10/2	<b>SD</b>	round	Israel			•	•			
33/20/1	30/20/1	<b>SD</b>	round	Israel			•	•			
33/20/2	30/20/2	<b>SD</b>	round	Israel			•				
33/34/1	30/34/1	<b>SD</b>	round	Israel / Brazil / China		•	•	•	•		
33/34/1	30/34/1	<b>FD</b>	round	China		•	•	•	•		
33/34/1 BZ	33/34/1 BZ	<b>MAT</b>	Oval Flat	Israel		•	•	•	•	•	•
33/34/2	30/34/2	<b>SD</b>	round	Israel/Brazil			•	•	•		
33/51/1	30/51/1	<b>FD</b>	round	China		•	•	•	•		
40/20/1 ECO	36/20/1 ECO	<b>SD</b>	round	Israel	SENSIL® EcoCare		•	•	•		
40/20/2 ECO	36/20/2 ECO	<b>SD</b>	round	Israel	SENSIL® EcoCare		•	•	•		
40/40/1	36/40/1	<b>SD</b>	round	Israel			•	•			
40/40/1 BF	36/40/1 BF	<b>SD</b>	round	Israel	SENSIL® Bodyfresh		•	•	•		
40/40/2 BF	36/40/2 BF	<b>SD</b>	round	Israel	SENSIL® Bodyfresh		•	•	•		
40/40/2	36/40/2	<b>SD</b>	round	Israel/Brazil			•	•			
40/60/1	36/60/1	<b>SD</b>	round	Israel	SENSIL® Ultra-Fine	•	•	•	•	•	•

YARN		LUSTER	CROSS-SECTION	PRODUCTION SITE	FEATURE	APPLICATIONS					
dtex	denier					covering	hosiery/socks	seamless	circular knit	weaving	warp knit
40/60/2	36/60/2	<b>SD</b>	round	Israel	SENSIL® Ultra-Fine	•	•	•	•	•	•
44/13/1	40/13/1	<b>SD</b>	round	Israel / Brazil			•		•		
44/13/2	40/13/2	<b>SD</b>	round	Israel / Brazil			•				
44/34/1 BK	40/34/1	<b>BK</b>	round	Israel	TACTEL® soft black (Dope Dye)	•	•	•			
44/34/1 FIR	40/34/1	<b>SD</b>	round	Israel	SENSIL® Innergy	•	•	•	•	•	•
44/34/2 FIR	40/34/2	<b>SD</b>	round	Israel	SENSIL® Innergy	•	•	•	•		•
44/34/1	40/34/1	<b>SD</b>	round	Israel / Brazil / China		•	•	•	•		
44/34/1	40/34/1	<b>FD</b>	round	China		•	•	•	•		
44/34/1 CW	40/34/1 CW	<b>SD</b>	round	Israel	SENSIL® (Colorwise)	•	•	•			
44/34/1 PS	40/34/1 PS	<b>SD</b>	round	Israel	SENSIL® (Pastelle)	•	•	•	•		
44/34/1 BX	40/34/1 BX	<b>BR</b>	trilobal	Israel	SENSIL® (Britex)	•	•	•	•		
44/34/2 BX	40/34/2 BX	<b>BR</b>	trilobal	Israel	SENSIL® (Britex)	•	•	•	•		



YARN		LUSTER	CROSS-SECTION	PRODUCTION SITE	FEATURE	APPLICATIONS					
dtex	denier					covering	hosiery/socks	seamless	circular knit	weaving	warp knit
44/34/1 AQ	40/34/1 A	<b>SD</b>	triple-T	Israel	SENSIL® Aquarius	•	•	•	•		
44/34/1 BZ	40/34/1 BZ	<b>MAT</b>	flat	Israel	SENSIL® Breeze	•	•	•	•	•	
44/34/1 HE	40/34/1	<b>SD</b>	round	Israel	SENSIL® Heat	•	•	•	•		
44/34/2 BZ	40/34/2 BZ	<b>MAT</b>	flat	Israel	SENSIL® Breeze	•	•	•	•	•	
44/34/2	40/34/2	<b>FD</b>	round	china		•	•	•	•		
44/34/2	40/34/2	<b>FD</b>	round	China		•	•	•	•		
44/34/2 PS	40/34/2 PS	<b>SD</b>	round	Israel	SENSIL® (Pastelle)		•	•	•		
44/34/2	40/34/2	<b>SD</b>	round	Israel / Brazil / China			•	•	•		
44/34/2 AC	40/34/2 AC	<b>SD</b>	round	Israel	SENSIL® (Duelle)		•	•	•		
44/34/2 CW	40/34/2 CW	<b>SD</b>	round	Israel	SENSIL® (Colorwise)		•	•	•		
44/34/2 AQ	40/34/2 A	<b>SD</b>	triple-T	Israel	SENSIL® Aquarius		•	•	•		
44/34/2 AR	40/34/2 AR	<b>SD</b>	round	Israel	SENSIL® (Arafelle)		•	•	•		
44/34/2 BK	40/34/2	<b>BK</b>	round	Israel	TACTEL® soft black (Dope Dye)			•	•		
44/34/2 HE	40/34/2	<b>SD</b>	round	Israel	SENSIL® Heat	•	•	•	•		
44/41/2	40/41/2	<b>DM</b>	round	Israel	SENSIL® (Duomix Stripy)	•	•	•	•	•	
44/41/2	40/41/2	<b>DM</b>	round	Israel	SENSIL® (Duomix Dot)	•	•	•	•	•	

YARN		LUSTER	CROSS-SECTION	PRODUCTION SITE	FEATURE	APPLICATIONS					
dtex	denier					covering	hosiery/socks	seamless	circular knit	weaving	warp knit
44/51/1	40/51/1	<b>FD</b>	round	China		•	•	•	•		
44/68/1	40/68/1	<b>FD</b>	round	China		•	•	•	•		
50/17 BD*	45/17	<b>BD</b>	R+T	Israel	SENSIL® (Black Diamond)	•	•	•	•	•	
60/60/1	54/60/1	<b>FD</b>	round	Israel / Brazil		•	•	•			
60/60/1	54/60/1	<b>SD</b>	round	Israel / China		•	•	•	•		
60/60/2	54/60/2	<b>SD</b>	round	Israel			•		•		
60/60/2	54/60/2	<b>FD</b>	round	Israel / Brazil			•	•	•		
60/92/1	54/92/1	<b>SD</b>	round	Israel	SENSIL® (Super Microfiber)	•	•	•	•		
60/92/2	54/92/2	<b>SD</b>	round	Israel	SENSIL® (Super Microfiber)	•	•	•	•		
64/53/2*	58/53/2	<b>DM</b>	round	Israel	SENSIL® (Duomix Stripy)	•	•	•	•		
64/53/2*	58/53/2	<b>DM</b>	round	Israel	SENSIL® (Duomix Dot)	•	•	•	•	•	
66/68/1*	60/68/1	<b>SD</b>	round	Israel / China		•	•	•	•		
66/68/2*	60/68/2	<b>SD</b>	round	Israel			•	•	•		
67/20/1*	60/20/1	<b>SD</b>	round	Israel			•				
70/41 BD*	63/41	<b>BD</b>	R+T	Israel	SENSIL® (Black Diamond)	•	•	•	•	•	

\*Available according to a Minimum Order Quantity (MOQ)

YARN		LUSTER	CROSS-SECTION	PRODUCTION SITE	FEATURE	APPLICATIONS					
dtex	denier					covering	hosiery/socks	seamless	circular knit	weaving	warp knit
70/40/1	64/40/1	<b>SD</b>	round	Israel	SENSIL® EcoCare		•	•	•		
70/40/2	64/40/2	<b>SD</b>	round	Israel	SENSIL® EcoCare		•	•	•		
78/23/1	70/23/1	<b>SD</b>	round	Israel	*		•	•			
78/23/2	70/23/2	<b>SD</b>	round	Israel			•	•			
78/34/1	70/34/1	<b>SD</b>	round	Israel		•	•	•	•		
78/34/2	70/34/2	<b>SD</b>	round	Israel		•	•	•	•		
78/48/1	70/48/1	<b>BX</b>	trilobal	Israel	SENSIL® (Britex)		•	•	•		
78/48/2	70/48/2	<b>BT</b>	trilobal	Israel	SENSIL® (Britex)		•	•	•		
78/68/1 BZ	70/68/1 BZ	<b>MAT</b>	flat	Israel	SENSIL® Breeze	•	•	•	•	•	
78/68/2 BZ	70/68/2 BZ	<b>MAT</b>	flat	Israel	SENSIL® Breeze	•	•	•	•	•	
78/68/1	70/68/1	<b>SD</b>	round	Israel / China		•	•	•	•		
78/68/1 FIR	70/68/1	<b>SD</b>	round	Israel	SENSIL® Innergy	•	•	•	•	•	
78/68/2 FIR	70/68/2	<b>SD</b>	round	Israel	SENSIL® Innergy	•	•	•	•	•	
78/68/1	70/68/1	<b>FD</b>	round	Israel / China		•	•	•	•		
78/68/1 AQ	70/68/1 AQ	<b>SD</b>	triple-T	Israel	SENSIL® Aquarius		•	•	•		
78/68/1 PS	70/68/1 PS	<b>SD</b>	round	Israel	SENSIL® (Pastelle)		•	•	•		

YARN		LUSTER	CROSS-SECTION	PRODUCTION SITE	FEATURE	APPLICATIONS					
dtex	denier					covering	hosiery/socks	seamless	circular knit	weaving	warp knit
78/68/1 CW	70/68/1 CW	<b>SD</b>	round	Israel	SENSIL® (Colorwise)			•	•		
78/68/2 CW	70/68/2 CW	<b>SD</b>	round	Israel	SENSIL® (Colorwise)			•	•		
78/68/2	70/68/2	<b>SD</b>	round	Israel / China		•	•	•	•		
78/68/2 AR	70/68/2 AR	<b>SD</b>	round	Israel	SENSIL® (Arafelle)			•	•		
78/68/2	70/68/2	<b>FD</b>	round	Israel / China			•	•	•		
78/68/2 AQ	70/68/2 AQ	<b>SD</b>	triple-T	Israel	SENSIL® Aquarius		•	•	•		
78/68/2 AC	70/68/2 AC	<b>SD</b>	round	Israel	SENSIL® (Duelle)		•	•	•		
78/68/1 HE	70/68/1	<b>SD</b>	round	Israel	SENSIL® Heat	•	•	•	•		
78/68/2 HE	70/68/2	<b>SD</b>	round	Israel	SENSIL® Heat	•	•	•	•		
80/70/2	73/70/2	<b>DM</b>	round	Israel	SENSIL® (Duomix Stripy)	•	•	•	•	•	
80/70/2	73/70/2	<b>DM</b>	round	Israel	SENSIL® (Duomix Dot)	•	•	•	•	•	
85/92/1	76/92/1	<b>SD</b>	round	Israel / china		•	•	•	•		
85/92/2	76/92/2	<b>SD</b>	round	Israel				•	•		
110/34/1	100/34/1	<b>SD</b>	round	Israel			•				

YARN		LUSTER	CROSS-SECTION	PRODUCTION SITE	FEATURE	APPLICATIONS					
dtex	denier					covering	hosiery/socks	seamless	circular knit	weaving	warp knit
78/68/1 ECO	78/68/1 ECO	<b>SD</b>	round	Israel	SENSIL® ECO CARE	•	•	•	•	•	•
78/68/1 ECO	78/68/1 ECO	<b>FD</b>	round	Israel	SENSIL® ECO CARE	•	•	•	•	•	•
78/68/2 ECO	78/68/2 ECO	<b>SD</b>	round	Israel	SENSIL® ECO CARE	•	•	•	•	•	•
78/68/2 ECO	70/68/2 ECO	<b>FD</b>	round	Israel	SENSIL® ECO CARE	•	•	•	•	•	•
130/116	118/116	<b>TM</b>	round	Israel	SENSIL® (Triomix Stripy)	•	•	•	•	•	
130/116	118/116	<b>TM</b>	round	Israel	SENSIL® (Triomix Dot)	•	•	•	•	•	
180/68	164/68	<b>SD</b>	round	Israel	CORDURA® brand qualifying yarn			•	•	•	
370/136	336/136	<b>SD</b>	round	Israel	CORDURA® brand qualifying yarn					•	
560/136	509/136	<b>BR</b>	round	Israel	CORDURA® brand qualifying yarn					•	
770/102	700/102	<b>BR</b>	round	Israel	Abrasion resistant						
1100/136	1000/136	<b>BR</b>	round	Israel	Abrasion resistant					•	

YARN		LUSTER	CROSS-SECTION	PRODUCTION SITE	FEATURE	APPLICATIONS					
dtex	denier					covering	hosiery/socks	seamless	circular knit	weaving	warp knit
44/34/1 ECO	40/34/1 ECO	<b>SD</b>	round	Israel	SENSIL® ECOCARE	•	•	•	•	•	•
44/34/1 ECO	40/34/1 ECO	<b>FD</b>	round	Israel	SENSIL® ECOCARE	•	•	•	•	•	•
44/34/1 BIO	40/34/1 BIO	<b>FD</b>	round	Israel	SENSIL® BIOCARE	•	•	•	•	•	•
44/34/2 ECO	40/34/2 ECO	<b>SD</b>	round	Israel	SENSIL® ECOCARE	•	•	•	•	•	•
44/34/2 ECO	40/34/2 ECO	<b>FD</b>	round	Israel	SENSIL® ECOCARE	•	•	•	•	•	•
44/34/2 BIO	40/34/2 BIO	<b>FD</b>	round	Israel	SENSIL® BIOCARE	•	•	•	•	•	•
78/68/1 ECO	70/68/1	<b>SD</b>	round	Israel	SENSIL® ECOCARE	•	•	•	•	•	•
78/68/1 ECO	70/68/1	<b>SD</b>	round	Israel	SENSIL® ECOCARE	•	•	•	•	•	•
78/68/1 BIO	70/68/1 BIO	<b>FD</b>	round	Israel	SENSIL® BIOCARE	•	•	•	•	•	•
78/68/2 ECO	70/68/2	<b>FD</b>	round	Israel	SENSIL® ECOCARE	•	•	•	•	•	•
78/68/2 ECO	70/68/2	<b>FD</b>	round	Israel	SENSIL® ECOCARE	•	•	•	•	•	•
78/68/2 BIO	70/68/2 BIO	<b>FD</b>	round	Israel	SENSIL® BIOCARE	•	•	•	•	•	•

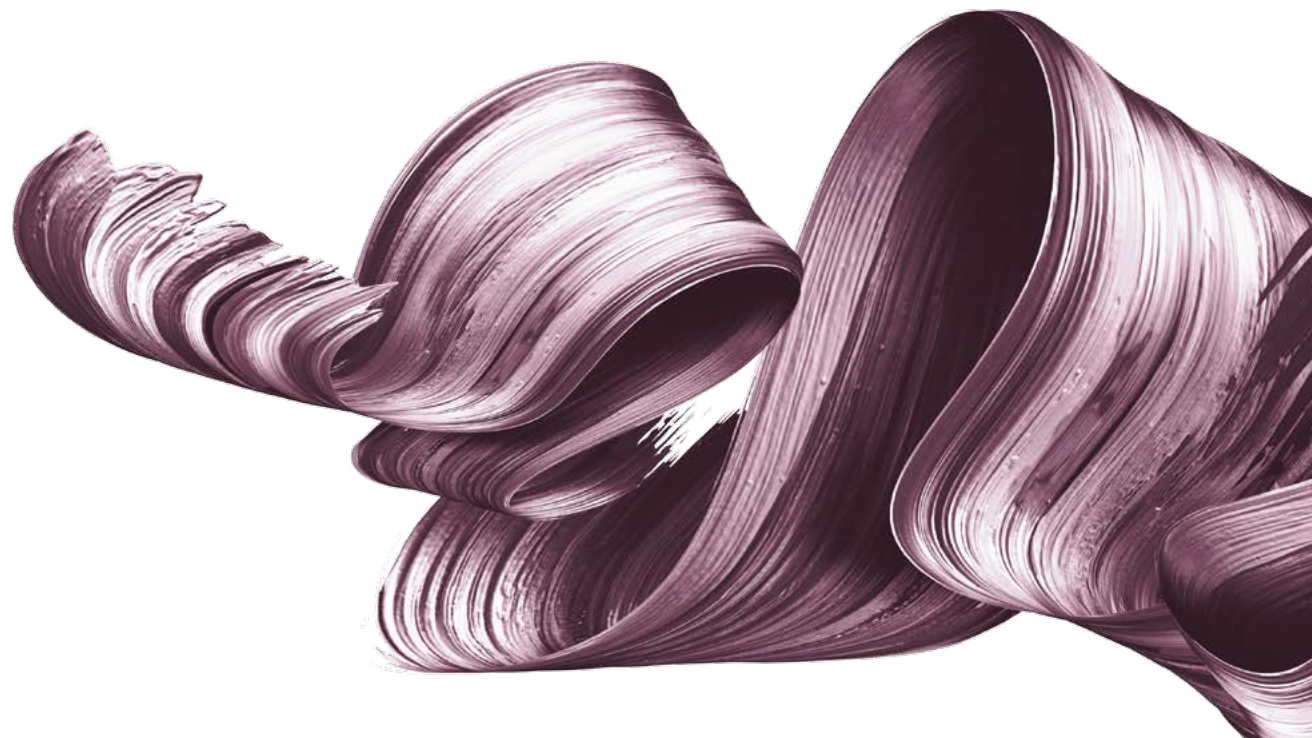
YARN		LUSTER	CROSS-SECTION	PRODUCTION SITE	FEATURE	APPLICATIONS					
dtex	denier					covering	hosiery/socks	seamless	circular knit	weaving	warp knit
44/34/1		<b>Black</b>	round	Brazil	DTY	•	•	•	•		
44/34/2		<b>Black</b>	round	Brazil	DTY	•	•	•	•		
60/60/1		<b>Black</b>	round	Brazil	DTY		•	•	•		
60/60/2		<b>Black</b>	round	Brazil	DTY			•	•		
74/34/1		<b>SD</b>	round	Brazil	DTY	•	•	•	•		•
74/34/2		<b>SD</b>	round	Brazil	DTY	•	•	•	•		•
74/34/3		<b>SD</b>	round	Brazil	DTY						•
74/34/4		<b>SD</b>	round	Brazil	DTY						•
74/34/6		<b>SD</b>	round	Brazil	DTY						•
78/46/1		<b>Black</b>	round	Brazil	DTY	•	•	•	•		
78/46/2		<b>Black</b>	round	Brazil	DTY	•	•	•	•		
80/23/1		<b>SD</b>	round	Brazil	DTY	•	•		•		
80/23/2		<b>SD</b>	round	Brazil	DTY	•	•		•		
80/46/1		<b>FD</b>	round	Brazil	DTY			•	•		
80/46/2		<b>FD</b>	round	Brazil	DTY			•	•		
84/68/1		<b>Black</b>	round	Brazil	DTY	•	•	•	•		

YARN		LUSTER	CROSS-SECTION	PRODUCTION SITE	FEATURE	APPLICATIONS					
dtex	denier					covering	hosiery/socks	seamless	circular knit	weaving	warp knit
78/68/1		<b>FD</b>	round	Brazil	DTY	•		•	•	•	
78/68/2		<b>FD</b>	round	Brazil	DTY			•	•		
80/68/1		<b>FD</b>	round	Brazil	DTY	•		•	•	•	
80/68/2		<b>FD</b>	round	Brazil	DTY			•	•		
84/68/2		<b>Black</b>	round	Brazil	DTY	•		•	•		
90/68/1		<b>Mix Black</b>	round	Brazil	DTY			•	•		
92/68/1		<b>Mix Black</b>	round	Brazil	DTY			•	•		
100/68		<b>Mix Black</b>	round	Brazil	ATY			•	•		
102/68		<b>Mix Black</b>	round	Brazil	ATY			•	•		
110/94/1		<b>Mix Black</b>	round	Brazil	DTY			•	•		
112/94/1		<b>Mix Black</b>	round	Brazil	DTY			•	•		
118/68		<b>FD</b>	round	Brazil	ATY			•	•		
170/114/1		<b>Mix Black</b>	round	Brazil	DTY			•	•		
172/114/1		<b>Mix Black</b>	round	Brazil	DTY			•	•		



YARN		LUSTER	CROSS-SECTION	PRODUCTION SITE	FEATURE	APPLICATIONS					
dtex	denier					covering	hosiery/socks	seamless	circular knit	weaving	warp knit
160/102		<b>Mix Black</b>	round	Brazil	ATY			•	•		
162/102		<b>FD</b>	round	Brazil	ATY			•	•		
164/102		<b>Mix Black</b>	round	Brazil	ATY			•	•		
180/136		<b>FD</b>	round	Brazil	ATY				•	•	
194/136		<b>Mix Black</b>	round	Brazil	ATY				•	•	
195/114		<b>Mix Black</b>	round	Brazil	ATY				•	•	
190/136		<b>SD</b>	round	Brazil	ATY				•	•	
210/136		<b>Black</b>	round	Brazil	ATY				•	•	

# COVERED YARNS



**NILIT®**

COMMITTED TO THE PLANET.  
COMMITTED TO YOU.

Core		Luster	Cross-Section	Production Site	TPM				
Type	Dtex				Type	hosiery/ socks	seamless	beaming	warp knit
16/10/1	15	<b>SD</b>	round	BRAZIL	with 751 Tpm - Twist "S" and "Z"	•	•		
16/10/1	20	<b>SD</b>	round	BRAZIL	with 500 Tpm - Twist "S" and "Z"	•	•		
17/5/1	20	<b>SD</b>	round	BRAZIL	with 1489 Tpm - Twist "S" and "Z"	•	•		
17/5/1	40	<b>SD</b>	round	BRAZIL	with 1489 Tpm - Twist "S" and "Z"	•	•		
22/7/1	70	<b>SD</b>	round	BRAZIL	with 1500 Tpm - Twist "S" and "Z"	•	•		
33/34/1	70	<b>SD</b>	round	BRAZIL	with 920 Tpm - Twist "S" and "Z"	•	•		
44/34/1	15	<b>SD</b>	round	BRAZIL	with 751 Tpm - Twist "S" and "Z"	•	•		
44/34/1	20	<b>SD</b>	round	BRAZIL	with 800 Tpm - Twist "S" and "Z"	•	•		
44/34/1	40	<b>SD</b>	round	BRAZIL	with 848 Tpm - Twist "S" and "Z"	•	•		
44/34/1	70	<b>SD</b>	round	BRAZIL	with 839 Tpm - Twist "S" and "Z"	•	•		
78/46/1	20	<b>BK</b>	round	BRAZIL	with 655 Tpm - Twist "S" and "Z"	•	•		
78/68/1	15	<b>FD</b>	round	BRAZIL	with 751 Tpm - Twist "S" and "Z"	•	•		
80/23/1	70	<b>SD</b>	round	BRAZIL	with 490 Tpm - Twist "S" and "Z"	•	•		

Core		Luster	Cross-Section	Production Site	TPM				
Type	Dtex				Type	hosiery/ socks	seamless	beaming	warp knit
15/10/1	20	<b>SD</b>	round	BRAZIL	Twist "S" and "Z"	•	•		
16/10/1	20	<b>SD</b>	round	BRAZIL	Twist "S" and "Z"	•	•		
33/34/1	15	<b>SD</b>	round	BRAZIL	Twist "S" and "Z"- for Beaming - WK - RASCHELL-LUPO	•	•		
33/34/1	40	<b>SD</b>	round	BRAZIL	Twist "S" and "Z"	•	•		
44/13/1	20	<b>SD</b>	round	BRAZIL	Twist "S" and "Z"	•	•		
44/34/1	15	<b>SD</b>	round	BRAZIL	Twist "S" and "Z"	•	•		
44/34/1	20	<b>SD</b>	round	BRAZIL	Twist "S" and "Z"	•	•		
44/34/1	20	<b>SD</b>	round	BRAZIL	Twist "S" and "Z" -for Beaming-WK - RASCHELL-LUPO	•	•		
78/46/1	40	<b>BK</b>	round	BRAZIL	Twist "S" and "Z"	•	•		
78/68/1	15	<b>FD</b>	round	BRAZIL	Twist "S" and "Z"	•	•		
78/68/2	20	<b>FD</b>	round	BRAZIL	Twist "S" and "Z"	•	•		
80/23/1	40	<b>SD</b>	round	BRAZIL	Twist "S" and "Z"	•	•		
81/23/1	20	<b>SD</b>	round	BRAZIL	Twist "S" and "Z"	•	•		

DOUBLE COVERED YARNS

Core		Luster	Cross-Section	Production Site	TPM				
Type	Dtex				Type	hosiery/ socks	seamless	beaming	warp knit
44/13/1	140	<b>SD</b>	round	BRAZIL	with 1,072 Tpm - Twist "S" under and 780 Tpm - Twist "Z" upper	•			
44/34/1	140	<b>BK</b>	round	BRAZIL	with 1,072 Tpm - Twist "S" under and 780 Tpm - Twist "Z" upper	•			
78/46/1	140	<b>BK</b>	round	BRAZIL	with 735 Tpm - Twist "S" under and 579 Tpm - Twist "Z" upper	•			
81/23/1	140	<b>SD</b>	round	BRAZIL	with 735 Tpm - Twist "S" under and 579 Tpm - Twist "Z" upper	•			

# CONTACT US:

## **NILIT® Ltd. Headquarters**

Maurizio Levi Rd.  
P.O. Box 276, Ramat Gabriel  
Migdal Haemek, 2310201 Israel  
Tel: + 972 4 654 4422  
Fax: + 972 4 654 4636  
E-mail: [globalsales@nilit.com](mailto:globalsales@nilit.com)

## **NILIT® America Inc.**

202 CentrePort Drive - Suite 325  
Greensboro, N.C. 27409, USA  
Tel: +1 336 605 1962  
Fax: +1 336 605 1951  
E-mail: [sales-usa@nilit.com](mailto:sales-usa@nilit.com)

## **NILITALIA® S.R.L.**

Via Toscana 6/8  
46042 Asola, Italy  
Tel: +39 03 76712011  
Fax: +39 03 76711056  
E-mail: [sales-italy@nilit.com](mailto:sales-italy@nilit.com)

## **NILIT® Nylon Technologies (Suzhou) Co., Ltd.**

No. 151 Song Bei Road  
Suzhou Industrial Park  
Jiangsu Province 215024  
P.R. CHINA  
Tel: 86 512 8816 5688  
Fax: 86 512 8816 5634  
E-mail: [sales-china@nilit.com](mailto:sales-china@nilit.com)

## **NILIT® Latin America LTDA**

Av. Queiroz Filho, 1700  
Villa Lobos Office Park - Torre D - sala 603  
Sao Paulo/SP CEP 05319-000 BRASIL  
Tel: +55 11 3871 1110  
E-mail: [nba-marketing@nilit.com](mailto:nba-marketing@nilit.com)

**NILIT®**

