

*A part of us is always close to you*



Nilit® Portfolio of Brands



### Presenting Nilit

Nilit® is a global manufacturer of nylon 6.6 polyamide fibres for fashion bodywear, activewear, legwear and intimate apparel.

Established more than 30 years ago, Nilit® was founded by overriding principles of uncompromisingly high standards and unparalleled attention to quality, details and service. The company has stayed true to its principles, working diligently over the years to develop innovative solutions that go one step further in meeting the demands of ever-changing markets.

At Nilit's state-of-the-art manufacturing facilities in Israel and Europe, the nylon is processed from polymerization to extrusion, to spinning and packaging. Its R&D centre develops advanced, customized yarns and fabric concepts for Nilit's worldwide customer base.

As a global enterprise, Nilit® maintains offices in Europe, Latin America, the United States and Asia Pacific. The company is headquartered in Israel, and its products are sold in more than 65 countries around the world.

### The benefits of Nilit's high-tech fibres

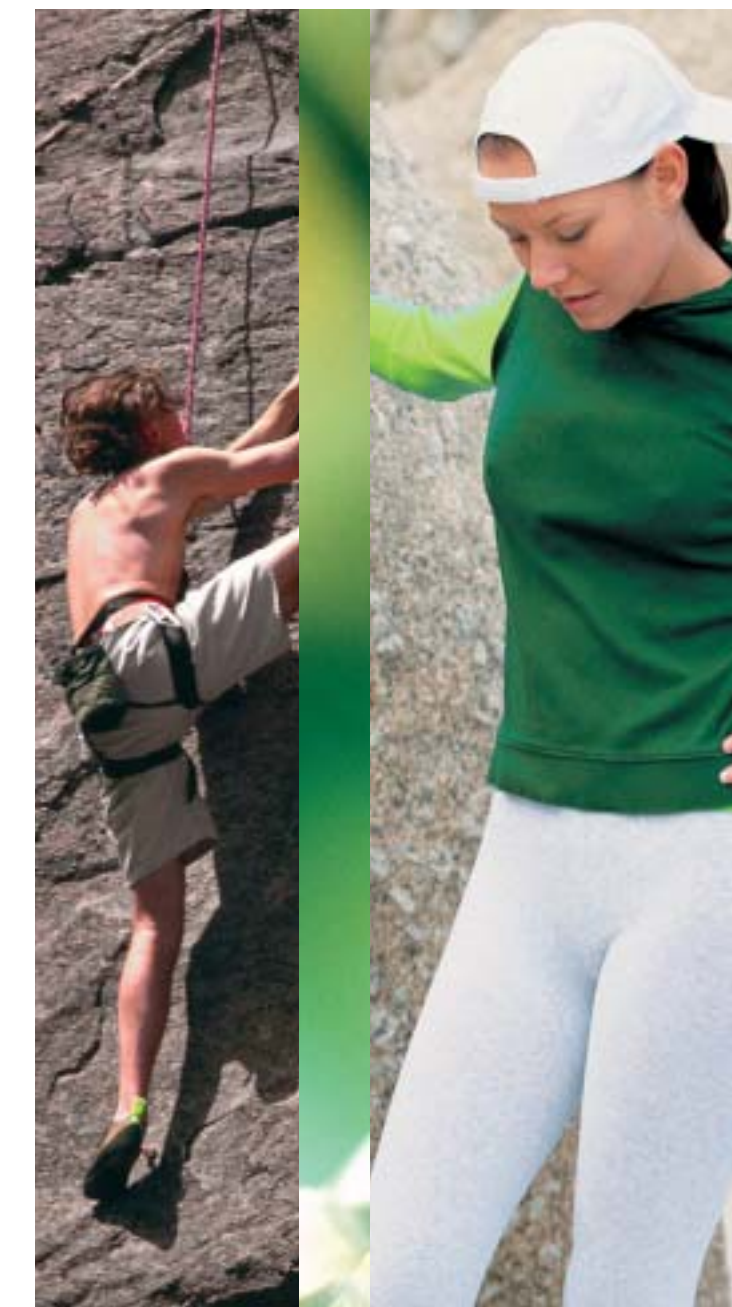
- High-color fastness
- A soft handle even after repeated washings
- Extremely easy-care
- Quick-drying
- No shrinkage
- Nearly wrinkle-free
- **Very lightweight:** comfortable to wear, no matter what the weather
- **Highly adaptable:** flexible enough for delicate intimate apparel to rugged outerwear
- **Especially versatile:** a range of surface effects from matte to shiny

Nilit® markets its own proprietary fibre products as well as TACTEL®, CORDURA® and SUPPLEX®, which are INVISTA brands used under license, all perfected for seamless, circular knitted and woven wear. At the forefront of the world's specialty yarn manufacturers, Nilit® continues the tradition of developing and offering high-quality, innovative, customized solutions in nylon 6.6. Close and intimate relationships with its customers contribute further to the search for just-right solutions to very specific needs.

*A part of us is always close to you*



TACTEL®, SUPPLEX® and CORDURA® fibres are registered trademarks of INVISTA and are used under license to NILIT®, for nylon fibre products.



Nilit®



*Flexible*



Nilit's® fibres reflect how we live today.

This family of advanced fibres makes the perfect choice for all types of high-fashion fabrics. The yarns have been designed to perform... every time, under every condition.

Highly functional fabrics developed from Nilit® yarns stretch and breathe with every move, making them very comfortable and highly wearable. Eye-catching, attractive colours and innovative dyeing techniques offer endless design possibilities.

Nilit® yarns produce a contemporary look with a fabulous feel that strike the delicate balance between comfort and fashion.

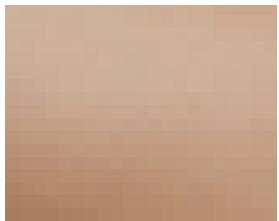
The Nilit® family of fibres delivers high-performance yarns for the way we live today.





### **Nilit® EverSheer**

- Highly durable fibres that cover and protect spandex
- Highly uniform, “leg and body hugging,” sheer appearance with no loose filaments – free from picks and snags



### **Nilit® Breeze**

- Highly transparent, 4-filament flat yarn with a low denier
- Super-Dull polymer and flat cross-section creates soft touch and provides superior ventilation



### **Nilit® Colorwise**

- Unique high-dye uptake rate results in very deep, rich shades of colour in one-step dyeing process
- Range of “tone to tone” colour shades
- Excellent for jacquards, stripes and other fashion effects



### **Nilit® Pastelle**

- With Colorwise: Two contrasting colours in one-step dyeing process
- With regular nylon 6.6: range of colour shades in one-step dyeing process
- Perfect for multicoloured fabrics in different designs and patterns



### **Nilit® Cupelle Concept**

- Two or more distinct - even contrasting - colours in one regular dyeing process
- Suited for high -fashion, multicoloured stripes, patterns, or segments
- Works well for two-tone piece-dyed jacquards



### **Nilit® Microsilik**

- Extra soft feel for a “second skin” effect
- Flat and textured yarns in a number of lustres and dtex levels



### **Nilit® Brillion**

- Bright, flat yarns -round, trilobal, and oval cross-sections
- Exceptionally smooth, soft hand and unique lustrous appearance



### **Nilit® Britex**

- Uniquely bright, textured yarns that can be knitted with or without spandex
- Soft to the touch, single- or two-ply yarns that drape well



### **Nilit® Arafelle**

- Heather-effect yarns from textured and flat fibres
- Cotton-like feel and appearance
- Melange effect in one-step dyeing process



### **Nilit® Duelle**

- Melange effect with Colorwise & Pastelle yarns
- Two distinct colours and deep contrast shades in one dyeing process



### **Nilit® Aquarius**

- Moisture management properties are built into the fiber - will not disappear even after repeated washings.
- Triple T cross-section increases the surface area for improved moisture management.
- Special micro-channels in the fiber actually carry moisture away from the body.



### **Nilit® BodyFresh**

- Antibacterial properties inside the polymer prevent bacteria that cause body odour
- Highly resilient, flexible and durable, handles well

CORDURA®



*Strong*



**CORDURA®**

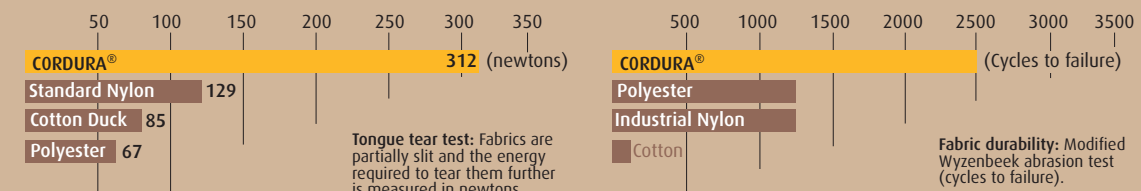
Cordura® sets the standard for strength and durability.

Up to three times stronger than standard nylon, Cordura® delivers where it's needed — in activewear, outerwear, consumer workwear apparel, denim and socks.

Its precise engineering makes fabrics from Cordura® the fabric of choice for rugged activewear to lightweight skiwear. There's no compromise on durability, high-performance aesthetics and even comfort with Cordura® fabrics that weigh next to nothing (100gr/m2).

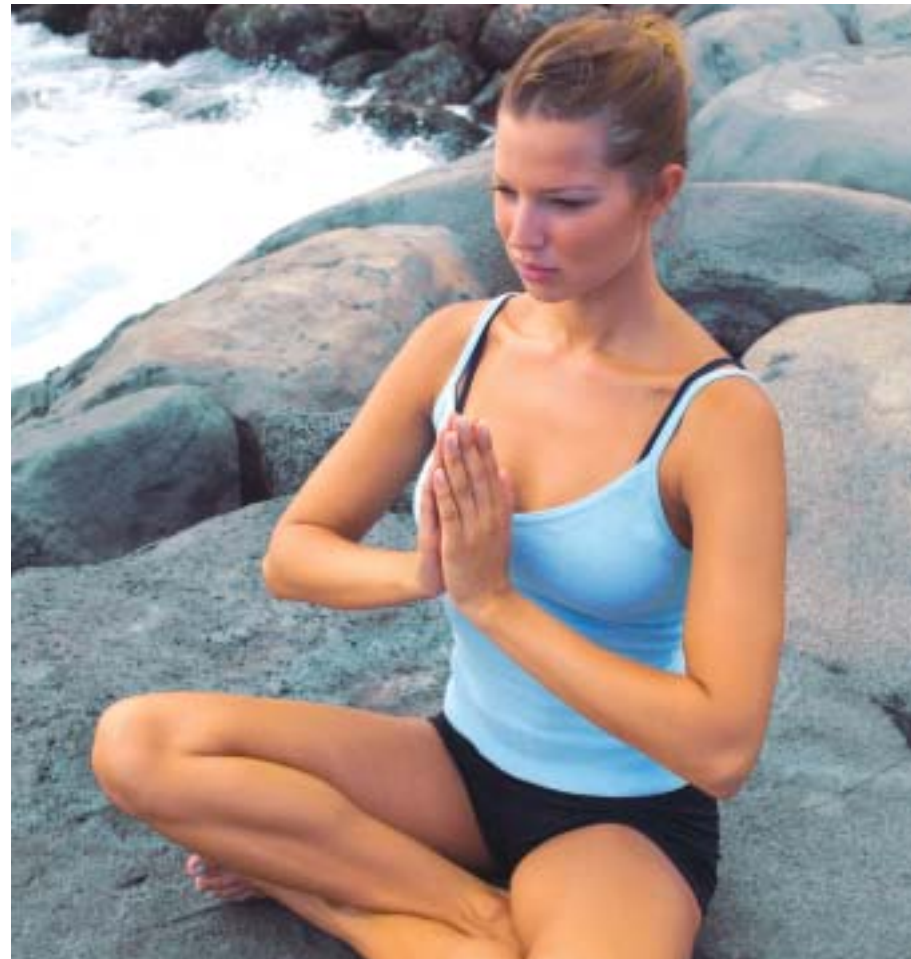
Abrasion-resistant Cordura® combines performance with versatility, so it can move effortlessly from motorcycle apparel to casual comfort. Cordura® brings all of the benefits of lightweight fabrics, but with unsurpassed durability.

Whether it needs to be active and durable or lightweight and comfortable, it has to be Cordura®.



CORDURA® is a registered trademark of INVISTA and is used under license by NILIT®, for nylon fibre products.

SUPPLEX®



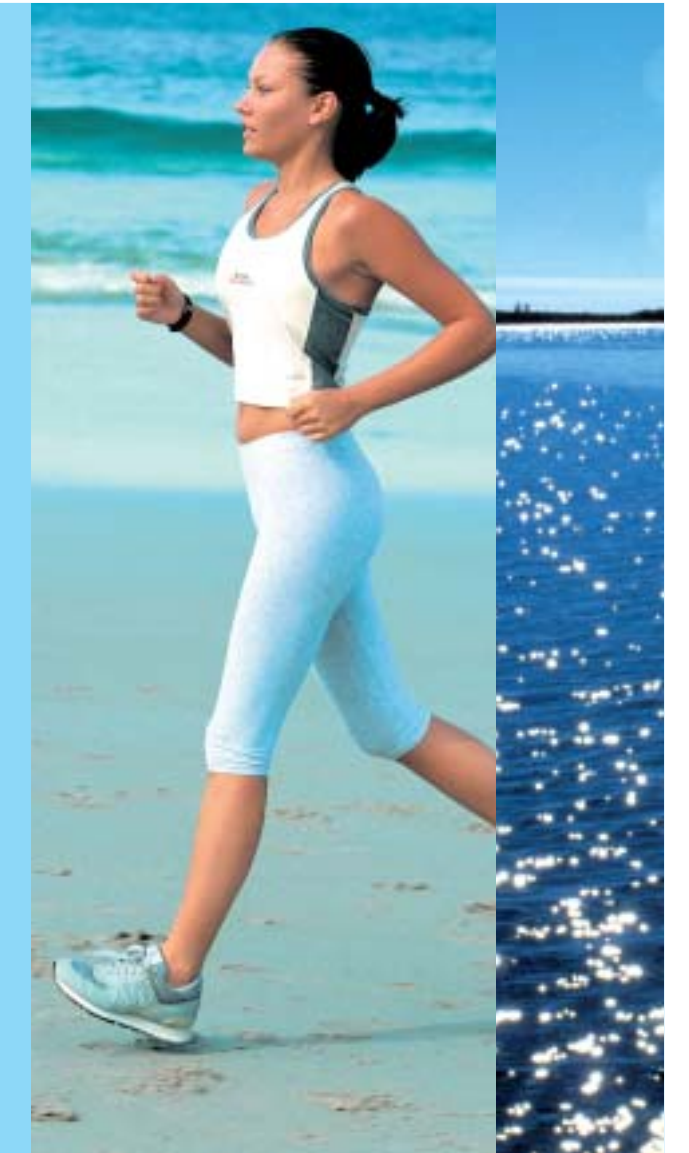
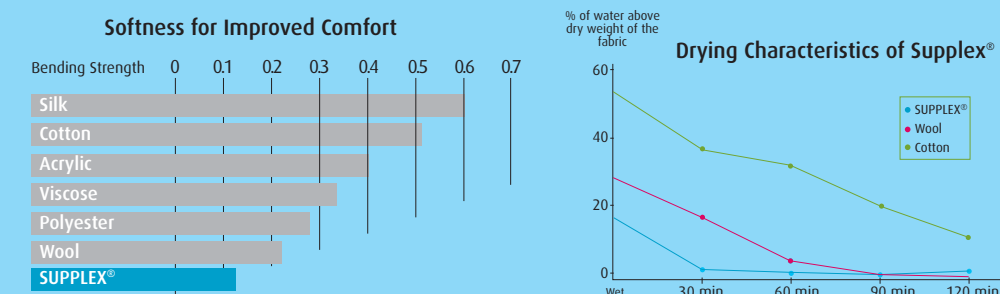
Soft



Supplex® is all about the touch, and the touch is soft. Cottony soft. With the advantages of high-tech fibres and the natural beauty of cotton, Supplex® meets the growing demand for quality Intimate apparel, legwear, swimwear, activewear/fitness, and outdoor/trekking. Supplex® delivers functional benefits versus conventional cotton fibres. It delivers fabrics that have an exceptionally smooth, natural hand, yet dry up to four times faster than cotton. Garments made with Supplex® can be worn repeatedly without compromising their fresh, stylish appearance. And they stay soft even after repeated washings.

**Supplex® UPF** addresses the growing demand of today's consumers for UV protection in their garments. Supplex® UPF has permanent protection due to the intrinsic UPF protection qualities, which stay in the fabric even after repeated washings.

Certified Supplex® UPF fabrics deliver very high UV protection — SPF 40 and higher — depending on the fabric and fabric construction. Just like cotton, Supplex® UPF is lightweight and breathable. It retains its ray-filtering properties even when wet. Perfect for swimwear, activewear, childrenswear, and lightweight outdoor/ trekking.



SUPPLEX® is a registered trademark of INVISTA and is used under license by NILIT®, for nylon fibre products.

TACTEL®



*Versatile*

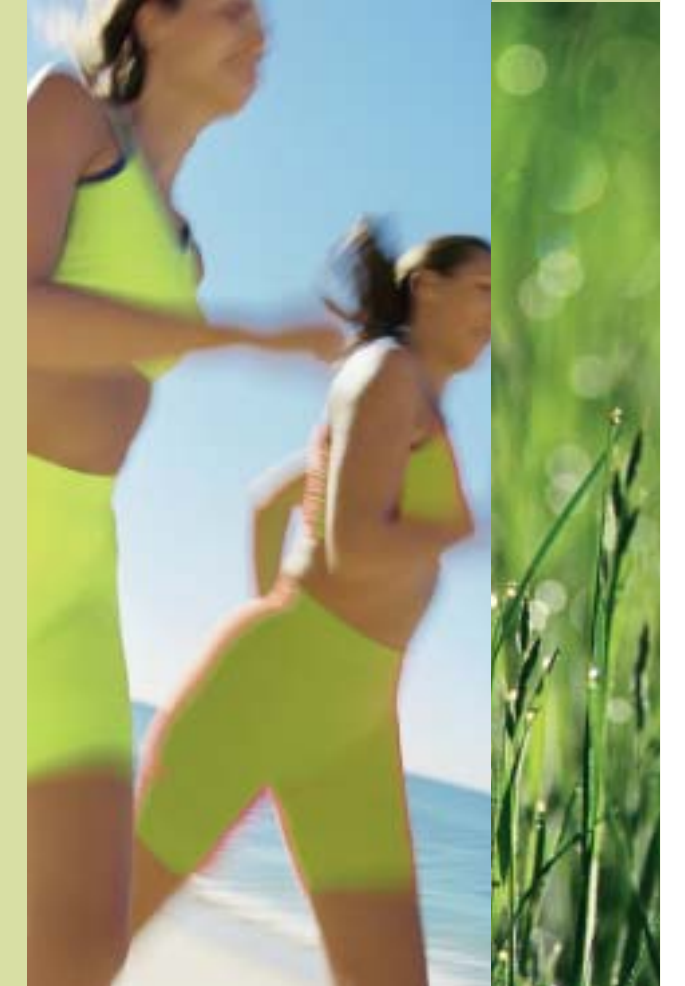


 Tactel®

The Tactel® family of next-generation yarns provide a truly versatile collection to meet the needs – and demands – of customers that want fashion, function and fit.

Garments produced with Tactel® yarns go beyond a fantastic feel and amazing appearance. Up to 20% lighter than most other fabrics, Tactel® delivers all of the strong, easy-care benefits associated with high-tech fibres. Progressive Tactel® fabrics appeal to the senses with effects that can be seen and felt. It's their superior drape. It's the variety of textures and aesthetics that gives them their irresistible touch (at least twice as soft as most other fibres).

The technology inherent in Tactel® enhances the design and creative possibilities for all types of clothing and accessories.

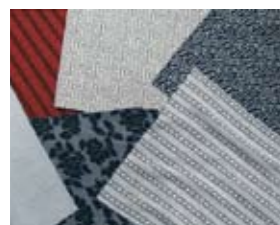


TACTEL® is a registered trademark of INVISTA and is used under license by NILIT®, for nylon fibre products.



#### **Tactel® diabolito**

- An intense, unique sheen and lustre that contrasts with a gentle, fluid drape
- Exceptionally smooth, silky handle
- Deep, rich colours



#### **Tactel® soft black**

- A very deep black with a very light touch - a soft spun-dyed yarn
- Exceptional colour fastness – stays full black for the life of the garment
- Overdye and patterning effects such as heathering and marl



#### **Tactel® strata**

- Two-tone colour effect in one yarn
- Reproducible effect across all shades – even blacks and highly vibrant colours
- Single-bath dye process



#### **Tactel® multisoft**

- Highly diverse multi-filament yarn range - shiny bright to fully dull - and drapes
- Round or trilobal cross-section
- Can be produced with surface effects that are soft and versatile



#### **Tactel® micro touch**

- A super-soft, luxurious hand (flat or textured), extra bright to full-dull lustres
- Ultrafine filaments in a range of 0.9-1.3 DPF for extra softness

